

SEAT No. _____

[1]

Sardar Patel University

Vallabh Vidyanagar

External Examination

Academic Year 2016-17

B.Ed. (Advanced), Semester – I (NC)

UE01EB2A20

EPC – 1- B Developing Reasoning and Logical Skills

Date: 13/4/17

Day: Thursday

Marks: 35

Timing: 1.5 hours

Instructions:

Each Multiple choice question contains one mark.

Write only the correct answers; don't write the method of drawing answers.

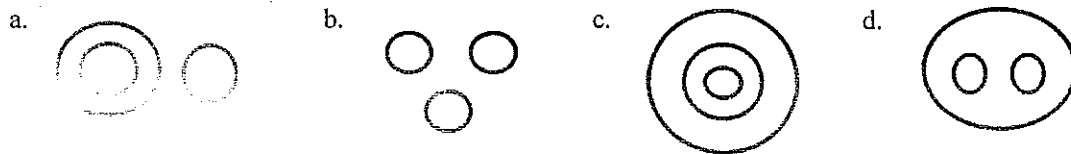
1. If the first half alphabetical series written in reverse order, which will be the 5th letter to the left of 13th letter from your right?
a. S b. E c. F d. D
2. If first four letters in the word AMMUNITION are written in reverse order and next four letters are again written in reversed order and the left two letters are again written in reversed order then after this change which will be the sixth letter from your right?
a. I b. U c. N d. T
3. How many such pairs are there in the word PERFUMERY having same number of letters left between them as they have in the alphabet?
a. 5 b. 4 c. 3 d. 1
4. If the following words are arranged in dictionary order then which will be the second word in that order?
a. Expound b. Exposure c. Expulsion d. Expose
5. If ELECTRODE is coded as EETLECDOR then how will DOCTRINAL be coded?
a. DCOLTANIR b. LDRTOCINA c. LADOCNIR
d. LDROCTANI
6. If SPANK is coded as PSNAK then how will THROW be coded?
a. HTORW b. HTWOR c. HTWRO d. HTRWO
7. If Hand is coded as Leg, Leg is coded as Ear, Ear is coded as Nose, Nose is coded as Eyes, then by which part of the body you walk on the earth?
a. Nose b. Leg c. Hand d. Ear
8. In a certain code language 674 means I am Blind, 751 means He is Blind, 432 means I fast Black, then what is the code used for Black?
a. 7 b. 5 c. 4 d. cannot be determined
9. Three words out of four are same in any way but rest one is different. Find the dissimilar word.
a. Ear b. Heart c. Lungs d. Kidney
10. Three words out of four are same in any way but rest one is different. Find the dissimilar word.
a. Sugarcane b. Beet c. Pea d. Banana
11. 'To Love' is related to 'To Hate' similarly 'To Laught' is related to what?
a. To Repent b. To Bewilder c. To Cry d. None of these
12. BCDB, CDDEC, DEEFD, _____
a. EFFFGE b. EFFFFGF c. EFFFFGE d. FEEFGF

[P.T.O]

13. MOKS:OLMP: : TULF : _____
 a. VNR b. VCRN c. WTOE d. VROC
14. Z15A, W13C, _____, Q9G, N7I.
 a. T12F b. R11F c. T11E d. R13D
15. Prabhat started to go towards west from his house and stopped after going 40 km. After he goes 30 km turning to his left. How far is he from his house?
 a. 30 km b. 25 km c. 50 km d. 70 km
16. A man is moving in the direction of west. He wants to go in the direction of North. Which of the following sequence of turns is correct?
 a. Left,Left,Left b. Left,Left, Right c. Right,Right,Right d. Left, Right, Left
17. How many 4's are there in the following number series which are preceded by 5 but not followed by 7?
 23423425473243192547547234529546
 a. One b. Two c. Three d. Four
18. Introducing Priyanka, Saroj says that her mother is the only daughter of my mother. How is Saroj related to priyanka?
 a. Mother b. Sister c. Daughter d. Aunt
19. Kamini says, "Rajeev's grandfather is the only son of my father," How is kamini related to Rajeev?
 a. Daughter b. Sister c. Niece d. Grandmother
20. If 'p' means ÷, 'q' means ×, 'r' means +, and 's' means -, then
 $16 \text{ q } 24 \text{ p } 8 \text{ r } 7 \text{ s } 9 = \underline{\hspace{2cm}}$
 a. 46 b. 55 c. 64 d. 35
21. The most essential for a train is _____
 a. Passengers b. Driver c. Engine d. Fans
22. In a race it is necessary _____
 a. Victory b. Prize c. Spectators d. Competitor

In each question from 23rd to 25th, group of three words is given. You have to choose one of the following four diagrams which represent the correct relationship of those three items.

23. Birth, Death, Prey
 24. Rupee, Paisa, Dinar
 25. Country, State, District



In the following question number 26th and 27th, a statement followed by two arguments is given. You have to decide which of the argument is strong and which weak argument is. Give answer (a) if only first argument is strong, give answer (b) if only second argument is strong, give answer (c) if both the arguments are weak and give answer (d) if both the arguments are strong.

26. Should those who received dowry be encouraged?

Arguments

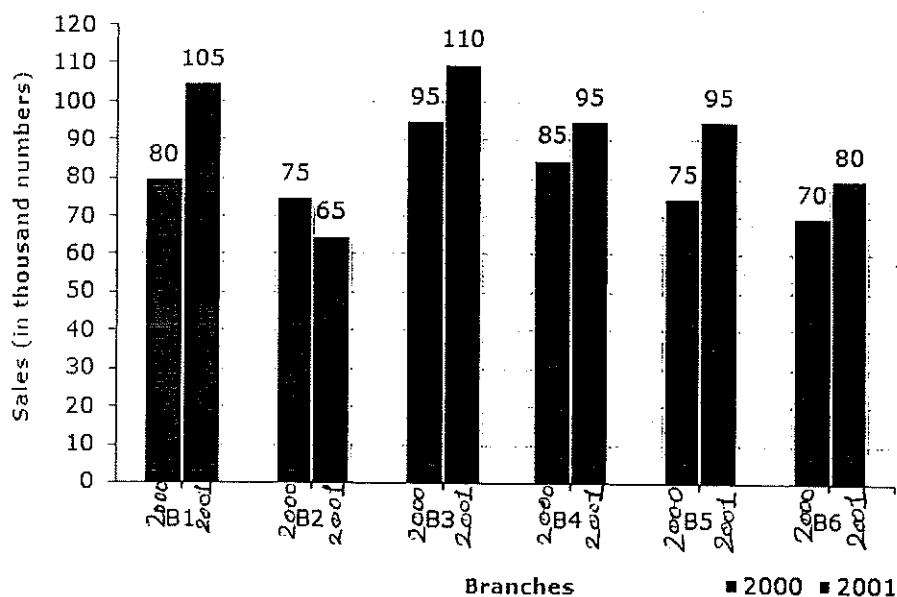
1. Yes, due to this, the number of those who receive dowry will decrease.
2. No, due to this the number of those who receive dowry will increase

27. Should new industries be started in Ankleshvar?

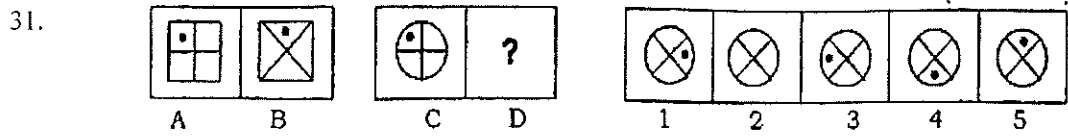
1. Yes, it will create new job opportunities
2. No, It will further add to the pollution of the city

Answer the question number 28th, 29th and 30th from the given information.

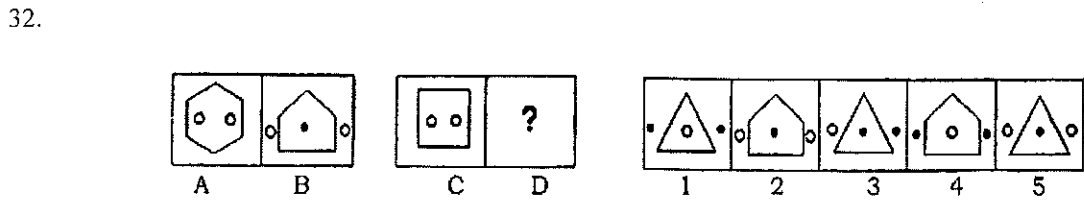
The bar graph given below shows the sales of books (in thousand numbers) from six branches of a publishing company during two consecutive years 2000 and 2001. Sales of Books (in thousand numbers) from Six Branches - B1, B2, B3, B4, B5 and B6 of a publishing Company in 2000 and 2001.



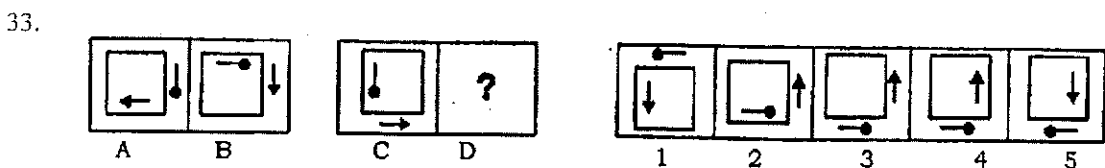
28. What is the ratio of the total sales of branch B2 for both years to the total sales of branch B4 for both years?
- a. 2:3
 - b. 3:5
 - c. 4:5
 - d. 7:9
29. What are the average sales of all the branches (in thousand numbers) for the years 2000?
- a. 73
 - b. 80
 - c. 83
 - d. 88
30. Total sales of branches B1, B3, and B5 together for both the years (in thousand numbers) are?
- a. 250
 - b. 310
 - c. 435
 - d. 560



- a. 1 b. 3 c. 4 d. 5



- a. 1 b. 5 c. 4 d. 3



- a. 1 b. 5 c. 4 d. 3

34. Choose the alternative which is closely resembles the mirror image of the given combination.

TARAIN1014A

(1) AFI01IARAL

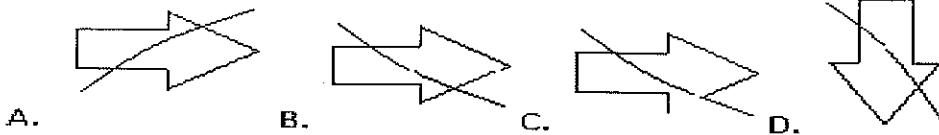
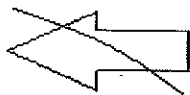
(2) AFI01IARAT

(3) AFI01IARAI

(4) AFI01IARAT

- a. 1 b. 2 c. 3 d. 4

35. Choose the alternative which is closely resembles the mirror image of the given combination.



SEAT No. _____

No. of Printed Pages : 2

[7-A]

Sardar Patel University, Vallabh Vidyanagar

B. Ed. (Advanced) Programme - CBCS

April - 2017 (NC)

Semester – 1 External Examination

UE01CB2A02

Perspective in Education (PE – II) : Childhood and Growing Up

Date: 15 / 04 / 17

Total Marks: 70

Day: Saturday

Timing: 10:00 am to 1:00 pm

Instructions:

- All the Six questions are compulsory.
- The figures in the brackets to the extreme right indicate marks.

Q.1 (A) Answer the following questions in brief. (Any Five out of Six) [15]

1. Write the significance of Child Psychology.
2. Explain the concept of Mental development of child.
3. Write a brief note on humanism in education.
4. State the types of personality according to Karl Young.
5. What are the two major issues of adolescents? Explain any one innovative strategy for personal issues of adolescents.
6. State the causes of ADD.

Q.2 Answer the following question. [10]

Children's emotional development. Emotional development is a complex task that begins in infancy and continues into adulthood. Discuss this statement in context to:

- a) Concept of Emotional development
- b) Factors affecting Emotional development

OR

Q.2 Write short notes on the following topics.

1. Difference between Growth and Development
2. Factors affecting the process of Socialization

Q.3 Answer the following questions in approximately 160 words each.

(Any Two out of Three) [10]

1. Differentiate the extrovert and introvert type of personality given by Karl Young.
2. Draw a figure of Maslow's Hierarchical needs and explain each need in detail.
3. Elaborate innovative strategies for adolescents personal issues.

P.T.O

Q.4 (A) Answer the following questions in brief. (Any Five out of Six)

[15]

1. What are the implications for Social Development of a child.
2. Explain the principles of Growth and Development.
3. State the factors influencing learning in context to a teacher.
4. State the problems and remedies of children in the society.
5. Explain the concept of socialization.
6. Give definition of adolescents and explain any one problem of adolescents in school.

Q. 5 Answer the following questions in brief.

[10]

1. Write any one definition of Educational Psychology.
2. When learning is said to be happened in a child?
3. Give two names of innovative strategies for counseling child career issues.
4. Write the abbreviation of attention deficiency disorder.
5. With which age group period of adolescence is most closely associated?
6. Which learning disability has difficulty in understanding words and ideas?
7. What is sex education?
8. Write two needs essential for self actualization in individual's life.
9. What according to you is the term 'Society'?
10. What is a major difference between Behaviourism and Humanism?

Q. 6 Answer the following questions in approximately 160 words each.

(Any Two out of Three)

[10]

1. Prepare an explanatory note on 'Education of ADD affected Children'.
2. Write a letter to your friend suggesting 'Scope of Educational Psychology'.
3. Write an article on 'Problems of Women and its Remedies' for the magazine Edutrack.

=====+++++++=====

Sardar Patel University, Vallabh Vidyanagar
SEAT No. _____ Academic Year 2016-17

First Year B. Ed. (Advanced)

Semester-1 External Examination (NC)

PE: 01 Contemporary India and Education

UE01CB2A01

Date: 7th April, 2017

Total Marks: 70

Day: Friday Time: 10:00 to 02:00 PM

Timing: 03 hours

Instructions:

- All the Six questions are compulsory.
- The figures in the brackets to the extreme right indicate marks.

Q.1 Answer the following questions in brief. (Any Five) [15]

1. Write the merits of RTE Act.
2. Write the significance of Distance Education.
3. Write the views of John Dewey on Pragmatic Education.
4. Write the challenges of International education.
5. What are the goals / objectives of Kothari Commission?
6. Explain Metaphysics with its sub branches.

Q.2 Discuss the following question in approximately 250 words. [10]

Discuss in detail the Features and Methods of teaching in Buddhist Education system.

OR

Q.2 Write short notes on the following topics.

1. RUSA: Practices and Importance
2. Jiddu Krishnamurty's Views on Holistic Education

Q.3 Answer Any Two of the following in approximately 160 words each. [10]

1. Describe the Nature of Education with relevant examples.
2. Critically review the Types of Education advocated by J.J. Rousseau.
3. Describe the Features of Muslim Education system with relevant examples.

Q.4 Answer the following questions in brief. (Any Five) [15]

1. Write the Nature of Philosophy.
2. Write the significance of Special Education.
3. Explain the features of educational policy.
4. Write the importance of Mid-day meal scheme.
5. Explain the concept of 'Philosophy' with any two definitions.
6. Write the objectives of Sarva Shiksha Abhiyan.

Q.5 Answer the Following Questions in Brief. [10]

1. Name the three pillars of Philosophy.
2. Define the term 'Education' in one sentence.
3. Education is a Tri-polar Process. Explain.
4. What is the full form of RMSA?
5. Which philosopher suggested a method of return to nature to cure all the diseases?
6. What is 'Pabajja'?
7. What are the centres of Muslim Education?
8. When did Kothari Commission exist?
9. Who said, 'Education means a sound mind in a sound body'?
10. Where was primary education given during British Education system?

Q.6. Discuss Any Two of the following in approximately 180 words. [10]

1. Write the main body of the seminar paper on Features of Formal, Informal and Non formal types of Education.
2. Write a letter to your friend explaining to him/her the Features and objectives of Education advocated by J.J. Rousseau.
3. You are invited to deliver a speech on, 'Vedic Education' in one Vedic Pathshala before the students. Include the concept, features and objectives with relevant examples.

[14]

SEAT No. _____ Sardar Patel University
Vallabh Vidyanagar
External Examination
Academic Year 2015-16
B.Ed. (Advanced), Semester – I (NC)
UE01CB2A03
PE – III Understanding School Dynamics

Date: 10/4/17
Day: Monday
Instructions

Marks: 70
Timing: 3 hours

- All six Questions are compulsory
- The figures in the bracket extreme right indicate marks.

Q. 1 Answer the following questions in brief. (Any Five) 15

1. Write definition and importance of School Management.
2. Which programmes are offered by IGCSE board? Give details of any one.
3. Which are the functional components of administration? Describe any one.
4. State and explain principles of scientific management by Mary Parker.
5. Explain the characteristics of school as learning organisation.
6. Write short note on rationale of PPP

Q. 2 Define Management. Explain Henry Fayol's principle of management with examples. 10

OR

Q. 2 Write short notes on the following topics.

- Material Resource Management
- Areas of Supervision

Q. 3 Answer any two in approximate 160 words each. 10

1. What are the ways to develop external link for academic administration?
2. Principal is the key element of the school. Give your comments.
3. Define Scientific Management theory and discuss any two principles given by Taylor.

Q. 4 Answer the following questions in brief. (Any Five) 15

1. Draw the hierarchy of State Board Educational management and explain each level in brief.
2. Describe major features of IBO Board.
3. Write process of supervision.
4. Define student council. State the importance of student council.
5. Explain the concept of system analysis approach.
6. Discuss the roles and responsibilities of staff council.

P.T.O

Q. 5 Answer the following questions in one or two sentences.

10

1. Write any three characteristics for effective management.
2. Name two component of administration.
3. State full form of ISC and ICSE.
4. State Full form of GSEB and GHSEB.
5. Who are Stakeholders in Educational organisation?
6. List any two advantages of school home partnership.
7. Give the full form of PPP.
8. Define Learning Organization.
9. List any two objectives of PTA
10. State any two main assumptions of 'Tayolrism'

Q. 6 Answer any two in approximate 160 words each.

10

1. Suggest innovative ideas to enrich textbook of Gujarat board.
2. Parents and teachers play vital role in the education of their child. In this context, discuss the need and importance of PTA.
3. 'Administrative problems of any organisation/school should be looked through harmonious human relations'. Justify the statement.

—X—

SEAT No. _____

No. of Printed Pages : 02

[18]

Sardar Patel University, Vallabh Vidyanagar
B. Ed. (Advanced) Programme CBCS
April 2017 (NC)
Semester – 1 External Examination
UE01EB2A08
CPS – 1 : Understanding Mathematics

Date: 11/04/17

Total Marks: 70

Day: Tuesday

Timing: 3 hours

Instructions:

(10:00 am to 1:00 pm)

- All the Six questions are compulsory.
- The figures in the brackets to the extreme right indicate marks.

Q.1 (A) Answer the following questions in brief. (Any Five out of Six) (15)

1. Explain the concept of Lecture cum discussion method in teaching Mathematics
2. Prepare an Activity stage for the concept 'Perimeter of a Triangle'.
3. How Demonstration technique help teacher in teaching Mathematics?
4. How student – student interaction helps in learning Mathematics?
5. Write the significance of questioning skill in teaching Mathematics.
6. Write the advantages and disadvantages of Problem solving method in teaching Mathematics.

Q.2 Answer the following question. [10]

Lecture-cum-demonstration includes the merits of the lecture as well as demonstration method. Discuss this statement in context to :

- a. Concept of Lecture cum Demonstration method
- b. Merits and Demerits of Lecture cum Demonstration method

OR

Q.2 Write short notes on the following topics.

1. Use of relevant terminology in Mathematics Classroom
2. Drill and Practice technique in Mathematics teaching

Q.3 Answer the following questions in approximately 160 words each.

(Any Two out of Three) [10]

1. Prepare two Teacher's activities to teach the concept 'Profit and Loss'.
2. Describe use of communication skills Mathematics teaching.
3. Elaborate explanation skills in teaching Mathematics.

Q.4 (A) Answer the following questions in brief. (Any Five out of Six) [15]

1. Write three applications of concept of construction in our daily life.
2. Differentiate between simple interest and compound interest with suitable illustration.
3. State the properties of Trapezium.
4. What is Polynomial? Give one example of two degree polynomial.
5. Write six trigonometric ratios used in Trigonometry.

6. Factorize the following using difference of square method
 a. $16a^2 - 9b^2$ b. $4a^2 - 25b^2$

Q. 5 Answer the following questions in brief.

[10]

1. Write two examples of binomial.
2. State Pythagoras Theorem.
3. Give the formula for finding Simple Interest.
4. What is the cube root of 64?
5. What is the formula for finding circumference of a circle.
6. Give the formula for finding loss.
7. What is the coefficient for leading term in the polynomial $9a^2 + a - 6$
8. Give reason why $x^2 + 2x + 5$ is a polynomial.
9. Write the Heron's formula for finding area of a triangle.
10. Give the degree of the following polynomial: $9Y^6 - 4Y^5 - 10y^3 + 9$

Q. 6 Answer the following questions in approximately 160 words each.

[10]

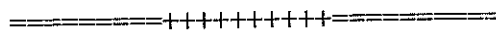
(Any Two out of Three)

1. Solve each of the following.

a. $3(x+5) = 2(-6-x) - 2x$

b. $\frac{m-2}{3} + 1 = \frac{2m}{7}$

2. Find the compound amount and compound interest on the principal 20,000 borrowed at 6% compounded annually for 3 years.
3. The perimeter of the quadrilateral is 50 cm and the lengths of three sides are 9 cm, 13 cm and 17 cm. Find the missing side of the quadrilateral.



SEAT No. _____

No. of Printed Pages : 1

[1]

Sardar Patel University
Vallabh Vidyanagar
External Examination, 2017

B.Ed. (Advanced), Semester – I (NC)
UE01EB2A03
EPC – 1 A Life Skills

Date: 6/4/17

Marks: 35

Day: Thursday

Timing: 10:00 to 11:30

Instructions

- All four questions are compulsory
- The figures in the bracket extreme right indicate marks.

Q. 1 (A) Answer the following questions in one or two sentences.

06

1. State three skills associated with cognition.
2. Give definition of Life Skills.
3. State four pillars of Dellor's report.
4. Name any two activities to develop empathy.
5. State the full form of UNESCO.
6. Give name of any one approach to teach life skills.

Q. 1 (B) Write a short note in approximately 125 words. (Any one)

05

- Dellor's Report
- Life skills: Concept and Need

Q 2 Identify and analyse core life skills given in the textbook of standard 8th.

07

OR

Q. 2 Write short notes in approximately 125 words each.

- Need of Life skills for Adolescent students
- Approaches of teaching Life skills

Q. 3 Prepare any two activities to develop problem solving and decision making skills of students.

07

OR

Q. 3 Write short notes in approximately 125 words each.

- Life skills given by WHO
- Role of teacher in developing Life skills

Q. 4 Answer any two out of three in approximately 150 words.

10

1. Write an article for a magazine on "Life Skill Education: An urgent Need of 21st Century".
2. As an expert, draft your speech on Importance of Classroom Activities for teaching Life skills.
3. Narrate an episode of drama and relate it with learning of Life skills.

—X—