

(2) Seat No.

No. of Printed Pages . 1

SARDAR PATEL UNIVERSITY

B.B.A.(General) Examination, First Semester (NC)

Saturday 11th March, 2017.

Session: Morning Time : 2-00 P.M. TO 4-00 P.M.

Subject Code : UM01CBBA01 Subject Title : Principles of Management

Total Marks : 60

Note : Figures to the right indicate marks.

Q.1 Give meaning of management and explain its significance and objectives. (15)

OR

Q.1 Discuss management as a "Process" and as a "Profession". (15)

Q.2 Explain the importance of planning and give planning premises. (15)

OR

Q.2 Narrate: Types of Plans. (15)

Q.3 Define organizing and explain its process and principles. (15)

OR

Q.3 Explain various forms of organization with diagram. (15)

Q.4 Give importance of motivation and discuss Herzberg's and Maslow's theory of motivation. (15)

OR

Q.4 Give meaning of leadership and explain various leadership styles. (15)

— X —
(1)

(2) Seat No.: _____

No. of Printed Pages : 1

SARDAR PATEL UNIVERSITY
B.B.A. (IST - SEMESTER) EXAMINATION
REGULAR & NC (GENERAL)
Tuesday, 14th March, 2017

2.00 - P.M TO 4.00 P.M

MANAGEMENT OF MSMEs: UM01CBBA02

Total Marks: 60

- Q-1 Clarify the concepts of 'Entrepreneur' & 'Entrepreneurship'. Discuss any five qualities of entrepreneurs. 15
- OR
- Q-1 Define MSMEs and describe the procedure of setting up MSMEs in India. 15
- Q-2 Write notes on: 15
- (A) Micro & Small Enterprises Cluster Development Programme.
- (B) Any two Schemes of NSIC for MSMEs.
- OR
- Q-2 Write notes on: 15
- (A) Credit Guarantee Scheme.
- (B) Any two MSMEs Schemes for Backward area.
- Q-3 Discuss the MSMEs Policies of Central Government. 15
- OR
- Q-3 Explain the provisions of MSME Development Act, 2006. 15
- Q-4 Write notes on: 15
- (A) Intellectual Property Rights.
- (B) Bar coding.
- OR
- Q-4 Write notes on: 15
- (A) International SME Network.
- (B) World Trade Organisation.

— X —
①

[2] Seat No. _____

No. of printed page: 01

SARDAR PATEL UNIVERSITY
B. B. A. (GENERAL) (I SEMESTER) EXAMINATION
2017

Wednesday, 15th March
2.00 p.m. to 4.00 p.m.

UM01CBBA03 : Company Management

Total Marks: 60

Q.1 Define "Office" and "Office Management". Describe the functions and responsibilities of Office Manager. (15)

OR

Q.1 Write notes on :
(1) Filing System.
(2) Use of technology and computer in office.

Q.2 Describe meaning, features merits and demerits of joint stock company. (15)

OR

Q.2 Write on :-
(1) Company formation procedure
(2) Conversion of private company in to public company.

Q.3 Describe the duties and powers of director of a company. (15)

OR

Q.3 Write notes on :
(1) Managing Director
(2) Position and qualification of a Director

Q.4 Write notes on. (15)

(1) Notice
(2) Minutes
(3) Resolutions

OR

Q.4 Write Notes on.
(1) Statutory Meeting.
(2) Annual General Meeting.



SARDAR PATEL UNIVERSITY
BBA (General) SEMESTER-IV EXAMINATION (NC) (2010)
Saturday, 18, March,
2017
10.00 A.M. TO 12.00 P.M.
UM04CBBA04/09: STATISTICS FOR MANAGEMENT-II

Total Marks: 60

Q.1 [A] 1. Explain: Population, Sample, Sampling and non-sampling error. [07]
2. Write advantages of sampling.

[B] Explain systemic sampling. Write merits and limitations of it. [08]

OR

Q.1 [A] Write a note on simple random sample. [07]

[B] Explain stratified sampling. Write merits and limitations of it. [08]

Q.2 [A] What is testing of hypothesis? Explain: One-tailed and two-tailed test and Type I and Type II error. [07]

[B] The mean height of 50 male students who showed above average participation in college athletics was 68.2 inches with standard deviation of 2.5 inches; while 50 male students who showed no interest in such participation had a mean height of 67.5 inches with a standard deviation of 2.8 inches. Test hypothesis that male students who participated in college athletics are taller than other male students. [08]

OR

Q.2 [A] It is claimed that a random sample of 100 tyres with a mean life of 15269 kms is drawn from a population of tyres which has a mean life of 15200 kms and a standard deviation of 1248 kms. Test the validity of the claim at 5% level of significance. [07]

[B] The mean yield of two sets of plots and their variability are as given below. Examine whether the difference in the variability in yields is significant at 5% level of significance. [08]

	Set of 40 plots	Set of 60 plots
Mean yield per plot	1258 lb.	1243 lb.
S.D. per plot	34	28

Q.3 [A] What is t-test? Write its applications. Also write two differences between small sample and large sample test. [07]

[B] A soap manufacturing company was distributing a particular brand of soap through a large number of retail shops. Before a heavy advertisement campaign, the mean sales per week per shop was 140 dozen. After the campaign, a sample of 26 shops was taken and means sales was found to be 147 dozens with standard deviation 16. Can you consider the advertisement effective? [8]

OR

Q.3 [A] A drug is given to 12 patients and the increments in their blood pressure were recorded as: 5 2 8 -1 3 0 -2 1 5 0 4 6. [7]
Is it reasonable to believe that the drug will in general be accompanied by an increase in blood pressure?

[B] A group of 5 patients treated with medicine A weight 42, 39, 48, 60 and 41 kgs; second group of 7 patients from the same hospital treated with medicine B weight 38, 42, 56, 64, 68, 69 and 62 kgs. Do you agree with the claim that medicine B increases the weight significantly? [8]

Q.4 [A] What is analysis of variance? Explain one way and two ways ANOVA. [07]

[B] In a survey of 200 boys of which 75 were intelligent, 40 had educated father, while 85 of the unintelligent boys had uneducated fathers. Do these figures support the hypothesis that educated fathers have intelligent boys? [08]

OR

Q.4 [A] The time taken by workers in performing a job by method I and method II is given below. [07]

Method-I	20	16	26	27	23	22	
Method-II	27	33	42	35	32	34	38

Do the data show that the variances of time distribution from population from which these samples are drawn do not differ significantly?

[B] A trucking company wishes to test average life of each of the four brands of tyres. The company uses all brands on randomly selected trucks. The records showing the lives (thousands of miles) of tyres are as given below. [08]

Brand-I	Brand-II	Brand-III	Brand-IV
20	19	21	15
23	15	19	17
18	17	20	16
17	20	17	18
	16	16	

Test the hypothesis at 1% level of significance that the average life for each brand of types is the same.

— X —

(2)

[2] Seat No: _____

No. of printed pages: 3

SARDAR PATEL UNIVERSITY
BBA (I-Semester) Examination
2017
Thursday, 16th March
10.00 am - 12.00 pm
UM01CBBA05 - Accounting for Management

Total Marks : 60

Note: Figures to the right indicate marks.

Q.1

- (a) Define Accounting and describe its objectives in detail. (09)
- (b) Explain the following terms: **(Any Three)** (06)
- | | | |
|------------|-------------|------------|
| 1. Debtors | 2. Purchase | 3. Capital |
| 4. Loss | 5. Cost | 6. Assets |

OR

Q.1

- (a) What is meant by 'Business transaction'? Explain the types of transactions with suitable illustrations. (09)
- (b) Write a note on:
'Types of Accounts'. (06)

Q.2 Write notes on : **(Any Three)** (15)

1. Business Entity Concept
2. Money Measurement Concept
3. Matching Concept
4. Going Concern Concept
5. Cost Concept

OR

Q.2

- (a) Explain 'Dual Aspect Concept' and 'Accounting Period Concept' with illustrations. (10)
- (b) Write a note on:
'International Financial Reporting Standards' (IFRS) (05)

Q.3 Journalise the following transactions in the books of Mahi Traders. (15)

- 2016**
Oct., 1 Started Business with Cash Rs. 90000, Machinery Rs. 40000, Building Rs. 85000, Furniture Rs. 13000 and Stock of Goods Rs. 5000.
1. Expenses incurred for inauguration of shop Rs. 6000.
 2. Appointed Mr. Kunal as an Accountant in the office.
 3. Deposited Rs. 19000 in Bank of India.
 5. Sold goods to Rutu worth Rs. 10000 at 10% Cash discount.
 8. Purchased goods of Rs. 15000 from Gayatri Traders at 8% trade discount.

10. Rs. 8000 were withdrawn for personal use.
15. A cheque of Rs. 13500 was given to Gayatri Traders in full settlement.
18. Purchased Stationary of Rs. 6500.
20. Cash sales Rs. 8000 and Cash purchases Rs. 10500.
24. Goods of Rs. 3000 were withdrawn for personal use.
28. Paid Salary Rs. 12000 by cheque.
30. Paid rent Rs. 4000.

OR

- Q.3 (a) Journalise the following transactions in the books of Pujan Traders and post them to ledgers for the month of September, 2016. (10)

2016 Started business with Rs. 150000 Cash.

Sept., 1

8. Purchased goods from Rajat Traders worth Rs. 18000 at 10% trade discount.
14. Deposited Rs. 40000 in Dena Bank.
18. Sold goods to Mayur & Sons Rs. 25000.
23. Paid Rs. 16000 to Rajat Traders in full settlement.

- (b) Discuss any two types of errors with the help of illustrations. (05)

- Q.4 Following is the Trial Balance of Atul Trader as on 31-3-2016. (15)

Debit balances	Rs.	Credit balances	Rs.
Plant and Machinery	160000	Capital	100000
Purchases	120000	Sales	354000
Stock (1-4-15)	60000	Purchase return	1500
Sales return	2000	Discount	1600
Discount	700	Sundry Creditors	50000
Bank charges	150	Bad debt reserve	1050
Sundry debtors	90000		
Salaries	13600		
Carriage inwards	1500		
Wages	20000		
Advertisement expenses	1500		
Carriage outward	2400		
Insurance	2500		
Cash on hand	1800		
Cash at Bank	12000		
Rent, rates & taxes	20000		
	508150		508150

Adjustments:

1. The closing stock valued at Rs. 70000.
 2. Provide depreciation at 12% on plant & machinery.
 3. Provide 5% Bad debts on sundry debtors.
 4. Interest on capital to be allowed at 10% per annum.
 5. Prepaid insurance Rs. 500.
 6. Outstanding salary Rs. 7000 and wages Rs. 3000.
- Prepare Final Accounts of Atul Traders from the above information.

OR

Q.4 Following is the Trial Balance of Mr. Suraj as on 31-12-2015.

(15)

Debit balances	Rs.	Credit balances	Rs.
Furniture	6400	Capital	125000
Machinery	62500	Bad debt reserve	2000
Building	75000	Creditors	25000
Bad debts	1250	Sales	154500
Debtors	38000	Bank overdraft	28500
Stock (1-1-2015)	34600	Purchase return	1250
Purchases	54750	Commission	3750
Sales return	2000		
Advertising	4500		
Interest on Bank overdraft	1180		
Cash balance	6500		
Taxes & Insurance	12500		
General expenses	7820		
Salaries	33000		
	340000		340000

Adjustments:

1. The stock on 31-12-2015 was Rs. 32500.
2. Depreciate Building at 5%, Furniture at 10% and Machinery at 20%.
3. Salaries Rs. 3000 and Taxes Rs. 1200 are outstanding.
4. Prepaid insurance Rs. 1000.
5. A provision of 10% Bad debts is to be made on debtors.

You are required to prepare Final Accounts from the above information.



(2) Seat No.: _____

No. of Printed Pages : 1

SARDAR PATEL UNVIERCITY

B.B.A. (GEN,CBCS,REG/NC)Examination, SEM-I

Friday , Date: ~~17-03-2017~~

Session : Evening TIME: 2:00 pm TO 4:00 pm

SUBJECT CODE: UMO1CBBA06

SUBJECT TITAL: MICRO ECONOMICS

MARKS:60

NOTE: 1. FIGURE TO THE RIGHT INDICATE FULL MARKS OF THE QUESTION.
2. YOUR ANSWER SHOULD BE PRECISE AND TO THE POINT.

Q-1) Explain and comment on the following, "economics is the science which studies human behavior as a relationship between ends and scare means which have alternative uses." Prof. Robbins. [15]

OR

Q-1) Discuss the nature and scope of economics. [15]

Q-2) Explain the following basic concepts: [15]

[a] Goods [B] Consumer's surplus [C] Price and rogue.

OR

Q-2)[A] State and explain the basic assumption of economic theory [8]

[B] What is utility? State it's types. [7]

Q-3) What is demand? Explain the low of demand and shift and change of demand curve. [15]

OR

Q-3) Define supply. Explain factor affected supply. [15]

Q-4) Explain the basic cost concepts of TC, FC, VC and AC, MC. [15]

OR

Q-4) Discuss the marginal productivity theory of distribution. [15]

— X —

①

(1) Seat No: _____

N0. Of printed pages: 02

SARDAR PATEL UNIVERSITY
B.B.A. (General) EXAMINATION
SEMESTER - I (NC)

Saturday, 18th March, 2017

BUSINESS MATHEMATICS-I (UM01CBBA07)

Time: - 2.00 p.m. to 4.00 p.m.

Total Marks: - 60

Note: Figures to the right indicate marks.

Q.1

- (a) If $A =$ set of the letters of the word 'WHAT', $B =$ set of the letters of the word 'HEAT' and $C =$ set of the letters of the word 'EATA' 04
Then find $B \times (A - B)$ and $C \times C$.
- (b) State and Prove De Morgan laws by taking 05
 $U = \{i, j, k, l, m, n, o, p\}$, $A = \{j, k, m, o\}$ and $B = \{k, n, p, i\}$
- (c) i) Express the following inequalities in a Modulus form: $-4 < x < 3$ 06
ii) Find power set of set $A = \{1, 2, 3\}$.

Q.1

OR

- (a) Define following terms: 04
1. Empty set
2. Power set
3. Intersection of two sets
4. Difference of two sets
- (b) State and verify Distributive Laws by Venn Diagram. 05
- (c) i) Express in the form of an interval: $|x - 5| < 3$ 06
ii) Express 0.21212121... into quotient form.

Q.2

- (a) Explain following terms with example: 04
1. Diagonal Matrix
2. Transpose matrix
- (b) If $A = \begin{bmatrix} 1 & 1 & 3 \\ 2 & 3 & 1 \\ 3 & 1 & 2 \end{bmatrix}$ and $B = \begin{bmatrix} 1 & 1 & 2 \\ 2 & 4 & 1 \\ 1 & 2 & 2 \end{bmatrix}$, then find AB and BA . 05
Also check whether $AB = BA$ or not.
- (c) Solve using inverse of a matrix: 06
$$x - 2y + 3z = 4$$
$$2x + y - 3z = 5$$
$$-x + y + 2z = 3$$

Q.2

OR

- (a) Solve the following equations by Cramer's rule: 05
 $2x + 3y = 11,$
 $x - 5y = -14$
- (b) If $A = \begin{bmatrix} 4 & -1 \\ -1 & 3 \\ 2 & 0 \end{bmatrix}$, $B = \begin{bmatrix} -2 & 5 \\ 3 & -1 \\ 5 & 2 \end{bmatrix}$ and $C = \begin{bmatrix} 2 & 4 \\ -1 & -5 \\ 3 & -2 \end{bmatrix}$, 05
Then find 1. $A + C$ 2. $A + B + C$ 3. $2A - 3B + C$
- (c) If $A = \begin{bmatrix} 5 & 4 \\ 3 & 2 \end{bmatrix}$ Then find $A^2 - 3A + 14I$. 05

Q.3

- (a) Show that the equation of a line having slope m and Y -intercept c is $y = mx + c$. 05
- (b) Given $A(2,4), B(6,8)$ and $C(a+4, 2a+6)$ and $\overline{AC} \perp \overline{AB}$, Find a . 05
- (c) Find the equation of a line whose slope is 3 and which passes through the intersection of the lines $x-4y+18=0$ and $x+y-12=0$. 05

Q.3

OR

- (a) Find the equation of line passing through the points $(1, 2)$ and $(2, 1)$. Also find its slope and intercepts on the axes. 05
- (b) Find a if the distance between $A(a, -4)$ and $B(-8, 2)$ is 10. 05
- (c) Find the value of k if the following points are collinear: $A(4,5), B(8,8)$ and $C(12, k)$. 05

Q.4

- (a) Write working rules for limit. 03
- (b) Evaluate following: 12
1. $\lim_{x \rightarrow 5} \frac{x^3 - 125}{x^2 - 25}$
 2. $\lim_{n \rightarrow \infty} \left(1 + \frac{3}{n}\right)^n$
 3. $\lim_{x \rightarrow 3} \frac{\sqrt{x+2} - \sqrt{5}}{x-3}$
 4. $\lim_{x \rightarrow 3} \frac{x^3 - 27}{x^2 - 5x + 6}$

OR

Q.4 Evaluate following:

1. $\lim_{x \rightarrow -1} \frac{x^2 + 4x + 4}{x + 2}$ 03
2. $\lim_{x \rightarrow 0} \frac{5^x - 3^x}{x}$ 04
3. $\lim_{x \rightarrow 2} \frac{x^3 - 3x^2 + 3x - 2}{x - 2}$ 04
4. $\lim_{x \rightarrow 0} \frac{1}{x} \left(\frac{3x+10}{5x+2} - 5 \right)$ 04

— ✕ —

(1) Seat No.: _____

No. of Pages: 01

SARDAR PATEL UNIVERSITY
B.B.A (SEMESTER I) EXAMINATION (NC)
Monday, 20th March, 2017
2:00 PM to 4:00 PM

UM01CBBA08 – FUNDAMENTALS OF BANKING & INSURANCE

Total Marks: 60

- Q-1 Define Commercial Bank. Discuss role of Banks in Economic Development. (15)
- OR**
- Q-1 [A] Define Bank and discuss types of Banks in detail. (10)
[B] Write note on: Telegraphic Transfer (05)
- Q-2 [A] Discuss General Relationship between Banker & Customer in detail (10)
[B] Write note on Bill of Exchange. (05)
- OR**
- Q-2 [A] Discuss in detail Banker's right of Lien (10)
[B] Write note on Cheque. (05)
- Q-3 [A] Short Note on: Peril (05)
[B] Define 'Insurance' and explain the need of Insurance in detail. (10)
- OR**
- Q-3 [A] Give meaning of Risk and discuss Categories of Risk. (09)
[B] Discuss limitations of Insurance. (06)
- Q-4 Define Insurance and discuss functions of Insurance in detail. (15)
- OR**
- Q-4 Write a note on following: (15)
1. Principle of Utmost Good Faith
2. Principle of Indemnity

— ✕ —

(3) Seat No.: _____

No. of Printed Pages : 1

SARDAR PATEL UNIVERSITY
F.Y.B.B.A (International Business) Semester – I (NC)
Code: UM01CBBB03
Subject: Commercial Geography India & World-I

Date: 15-03-2017
Wednesday

Time: 2:00P.M. To 4:00P.M
Total Marks: 60

Note: Justify your answers according to marks.

Q.1 Give the Definition and Nature of Commercial Geography. 15

OR

Q.1 What are the importance of Commercial Geography? 15

Q.2 What is Man & Environment? Explain the different types of Environment. 15

OR

Q.2 Discuss the factors of distribution of Various Economic Activity. 15

Q.3 Explain the Climatically region of India and its Characteristics. 15

OR

Q.3 Write a note on: a) The monsoon winds b) Relief 15

Q.4 Explain the Important Ocean. And Discuss about North Atlantic Ocean Route. 15

OR

Q.4 Write a note on International Ports and Cargoes. 15

— X —
①

(4) Seat No. _____

No. of printed page: 1

SARDAR PATEL UNIVERSITY

B.B.A. (International Business)

Semester –I Examination (NC)

Friday, 17th March, 2017

2:00p.m.to4:00 p.m.

UM01CBBB05

MICRO ECONOMICS

Total Marks: 60

Q.1 Define the Economics. Explain the Nature and Scope of Economics. (15)

OR

Q.1 Explain Robin's definition of Economics with its limitations. (15)

Q.2 Write a brief note on following concepts:

1. Goods (08)

2. Types of Utility. (07)

OR

Q.2 Explain the consumer surplus with its suitable schedule and figure. (15)

Q.3 Examine the Law of Demand with its schedule figure and determinants. (15)

OR

Q.3 Write Short Note:

1. Law of Supply (08)

2. Equilibrium Price (07)

Q.4 Write a brief note on Total cost, Fixed Cost and Average cost. (15)

OR

Q.4 Elaborate the Marginal Productivity theory of Distribution with its Limitations. (15)

— X —

(1)

(3) Seat No.: _____

No. of Printed Pages: 02

SARDAR PATEL UNIVERSITY
BBA (IB) EXAMINATION
SEMESTER – I (NC)

Saturday, 18th March 2017

UM01CBBB06: BUSINESS MATHEMATICS

Time: - 2.00 p.m. to 4.00 p.m.

Total Marks: - 60

Q.1

- (a) Verify using Venn Diagram: $(A \cap B)' = A' \cup B'$ 04
- (b) If $A =$ set of the letters of the word 'WHAT', $B =$ set of the letters of the word 'HEAT' and $C =$ set of the letters of the word 'EATA'. Then find $B \times (A - B)$ and $C \times C$. 05
- (c) If $A = \{1,2,5,6,8\}$, $B = \{x: x \text{ is even}, x \leq 10, x \in N\}$ and $C = \{1,2,3,5,6,11,12\}$. Then verify 06
- $A \cap (B \cup C) = (A \cap B) \cup (A \cap C)$
 - $A \cup (B \cap C) = (A \cup B) \cap (A \cup C)$

Q.1

OR

- (a) Define the terms with illustration: (1) Union of two sets (2) Compliment of a set 04
- (b) If $U = \{x: 1 \leq x \leq 10, x \in N\}$, $A = \{1,2,3,4,5\}$, $B = \{2,3,4,6,7\}$ and $C = \{3,4,5,7\}$, then find $A \cup B$, $B \cap C$, $A - B$, $A \Delta C$ and A' . 05
- (c) If $U = \{x: 1 \leq x \leq 10, x \in N\}$, $A = \{1, 2, 5, 6, 9\}$ and $B = \{2, 4, 6, 8\}$ then 06
- Verify: (1) $(A \cup B)' = A' \cap B'$ (2) $(A \cap B)' = A' \cup B'$

Q.2

- (a) Show that the equation of a line having slope m and Y - intercept c is $y = mx + c$. 04
- (b) Show that the points $P(2,3)$, $Q(6,5)$ and $R(12,8)$ are collinear. 05
- (c) Find the equation of a line whose slope is 2 and which passes through the intersection of the lines $x - 4y + 18 = 0$ and $x + y - 12 = 0$. 06

OR

Q.2

- (a) Show that the equation of a line having slope m and passing through $A(x_1, y_1)$ is $y - y_1 = m(x - x_1)$. 04
- (b) Find a if the distance between $A(a, -4)$ and $B(-8, 2)$ is 10. 05
- (c) Find the equation of a line passing through the point $(7, 4)$ and making equal intercepts on the co-ordinate axes. 06

(1)

(P.T.O.)

Q.3

- (a) The production of a company at present is 40,000 tons. It aims at 9% growth rate of Production. Find out its production at the end of 8th year? 07
- (b) The population of a city at present is 76,162, which was 65,673 before 5 years. Find out the rate of growth of the population of the city. 08

OR

Q.3

- (a) Mr. A borrows Rs. 32,000 at the rate 16% of simple interest and invests it on the same day at 14% of compound interest. At the end of 5 years how much profit or loss will he have? 07
- (b) Find the compound interest on Rs. 13500 at 11% per annum for 4 years, if the interest is calculated (1) annually (2) Semi-annually. 08

Q.4

- (a) In a mixture of 60 litres, the ratio of milk and water 2: 1. If this ratio is to be 1: 2, then find the quantity of water to be further added. 07
- (b) Convert the following decimals into fraction: 08
- (1) 11.45% (2) 4.23% (3) 0.0975% (4) 0.002%

OR

Q.4

- (a) Define: Proportion, Percentage and Ratio with example. 07
- (b) Salaries of Mr. A and Mr. B are in the ratio 2: 3. If the salary of each is increased by Rs. 4000, the new ratio becomes 40: 57. What is Mr. B's salary? 08

— X —

(4) Seat No.: _____

No. of Printed Pages : 1

SARDAR PATEL UNIVERSITY
BBA(FT/IB) (I Semester) Examination (NC)
Subject: Principles of Management
Code: UM01CBBF01/B01
Year: 2016-2017

Date : 11/03/2017
Day : Saturday

Time: 2:00 p.m to 4:00 p.m
Total Marks: 60

- Q.1(a) Define Management and briefly discuss its significance. [09]
(b) "Management is a Process." Explain. [06]

OR

- Q.1(a) Point out differences between Management and Administration [08]
(b) Briefly discuss functions of different levels of management. [07]

- Q.2 Discuss briefly internal and external Planning Premises. [15]

OR

- Q.2 Explain Planning Process and constraints in Planning. [15]

- Q.3 Narrate Organising and explain Principles of organizing briefly. [15]

OR

- Q.3 Evaluate : [15]
1) Line & Staff organization
2) Centralization v/s Decentralization

- Q.4(a) Discuss Mc Gregor's theory of Motivation with criticism. [10]

- (b) Explain Paternalistic Style of Leadership. [05]

OR

- Q.4(a) Discuss the Principles of effective communication. [08]

- (b) Enumerate importance of controlling. [07]

— X —
(1)

(5) Seat No.:

SARDAR PATEL UNIVERSITY
FYBBA [Foreign Trade] SEM - I
Accounting for Foreign Trade
UM01CBBF05/04

No. of Printed Pages : 3

Date : 16-03-2017, Thursday
TIME : 2 pm to 4 pm

TOTAL MARKS : 60

- Q.1 A) Define accounting & explain its classification. 08
B) Differentiate Capital Expense & Revenue Expense 07
- OR
- Q.1 A) State the scope of Accounting 10
B) State the rules of Debit & Credit of Personal Account, Nominal Account and Real Account with example 05
- Q.2 Journalize following Transaction in the books of Shri Suhrad of July 2016 15

July 1	Commenced business with cash Rs. 50,000
July 2	Goods purchased for cash Rs. 30000
July 3	Paid freight Rs. 2000
July 5	Goods sold to Jay on credit Rs. 13000
July 8	Paid for Stationery Rs. 1000
July 10	Paid for Rent Rs. 5000
July 12	Cash received from Mahant Rs. 15,400. Allowed him discount Rs.600
July 15	Paid premium Rs. 4000
July 18	Paid for postage Rs.100
July 20	Rakesh was declared insolvent. Only 50% amount received from total debt of Rs. 10000.
July 21	Paid for salaries Rs. 8000
July 25	Cash Sales Rs. 21,800
July 28	Paid into bank Rs.20,000
July 30	Withdrawn Rs. 500 from bank for office use.

OR

- Q.2 A) Journalize the transactions given below in the book of Nilkant 10

2014 July 1	Goods of the cost of Rs. 1400 were completely destroyed by fire. The goods were not insured.
July 2	Goods of Rs. 2400 were damaged by fire. The insurance company accepted a claim for Rs. 1600. The goods damaged were sold for Rs.360
July 3	Goods costing Rs. 800 are stolen from godown.
July 4	Goods worth Rs. 400 were distributed free among the poor.
July 7	Goods costing Rs. 960 were distributed free as sample.
July 8	Goods of Rs. 700 were withdrawn for personal use.
July 10	Goods of Rs.480 were soaked by rain and were sold for Rs.260
July 12	Goods of Rs.320 were received as samples.
July 14	Goods of Rs. 250 were received as samples and were sold for Rs.220

- B) Explain various subsidiary books. 05

①

Q.3 From the following Trial Balance of Anish Sharma, you are required to prepare Trading Account, P & L A/c and Balance sheet for the year ended 31st March 2015 15

Particulars	Rs.	Particulars	Rs.
Sales	3,55,000	Sundry Debtors	30,000
Sales Return	5,000	Rent Received	3,000
Purchases	2,52,000	Discount received	3,000
Return Outward	2,000	Discount allowed	2,000
Carriage outward	1,000	Commission allowed	1,000
Carriage inward	5,000	Taxes & Insurance	3,000
Opening Stock	40,000	Provision for Doubtful debts	2,000
Direct Expense	5,000	Bad debts	1,500
Capital	60,000	Salaries	20,000
Furniture	5,000	Dividend Paid	5,000
Bank Overdraft	10,000	General Expenses	5,000
Buildings	45,000	Rent Paid	3,000
Plant & Machinery	40,000	Bills Receivables	21,500
Sundry creditors	25,000		
Bills Payable	30,000		

Additional Information :

1. Stock at the end Rs.42,000
2. Depreciation on Plant & Machinery Rs.2000 and on Buildings Rs. 1,000
3. Provision for Doubtful debts at 5% on sundry debtors.
4. Outstanding rent Rs.1000
5. Prepaid salaries Rs.1000
6. Interest on capital at 5%

OR

Q.3 The following is the Trial Balance of Nishant Ltd. as on 31st March 2015.

15

Particulars	Rs.	Rs.
Op. Stock	75000	
Purchase returns		10000
Purchases & Sales	245000	340000
Wages	30000	
Discount		3000
Carriage Inward	950	
Furniture & Fittings	17000	
Salaries	7500	
Rent	4000	
Sundry Expenses	7050	
Profit & Loss Appropriation A/c, 31-03-2014		15000
Dividend Paid (2013-14)	9000	
Equity Share Capital		100000
Debtors & Creditors	27500	17500
Plant & Machinery	29000	
Cash at bank	46200	
General Reserve		15500
Patents & Trademarks	4800	
Bills Receivables & Bills Payable	5000	7000
	5,08,000	5,08,000

Prepare the final accounts for the year ended 31st March 2015 after considering following adjustments :

1. Stock as on 31st March 2015 was valued at Rs.88,000
2. Make a provision of Income Tax at 50%
3. Depreciate plant & Machinery at 15%, Furniture at 10% and Patents at 5%
4. On 31st March 2015 outstanding rent Rs. 800 while outstanding salaries Rs.900.
5. The directors proposed a dividend at 15% per annum. Transfer the minimum required amount to General Reserve i.e. 5% of Net profit.
6. Make a provision for doubtful debts amounting to Rs. 510.
7. Provide managerial remuneration at 10% of net profit before tax.

Q.4 Lucknow crafts ltd. incorporated in India with its Head office at Lucknow & branch at Toronto, Canada. Books of the Head office and its independent branch as on 31st December 2015 are as follows: 15

Particulars	Head Office (in Rs.)	Branch (In \$)
Debit Balance:		
Fixed assets at cost	4,50,000	9,000
Debtors & cash	17,600	360
Operation costs	1,03,700	2,250
Branch current account	42,600	
	6,13,900	11,610
Credit balances:		
Share capital	2,00,000	
Reserves	1,10,800	
Sales Revenue	1,86,300	4,800
Creditors	9,300	250
Head Office Current A/c		4,200
Accumulated depreciation	1,07,100	2,360
	6,13,900	11,610

The following information is provided regarding exchange rates :

The fixed assets of the branch were required when one U.S.dollar was equal to 10 rupees. The exchange rates on December 2015 were as follows:

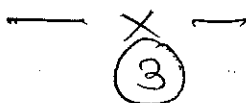
1 st January	1\$ - 13 Rs.
Average	1\$ - 14 Rs.
31 st December	1\$ - 15 Rs.

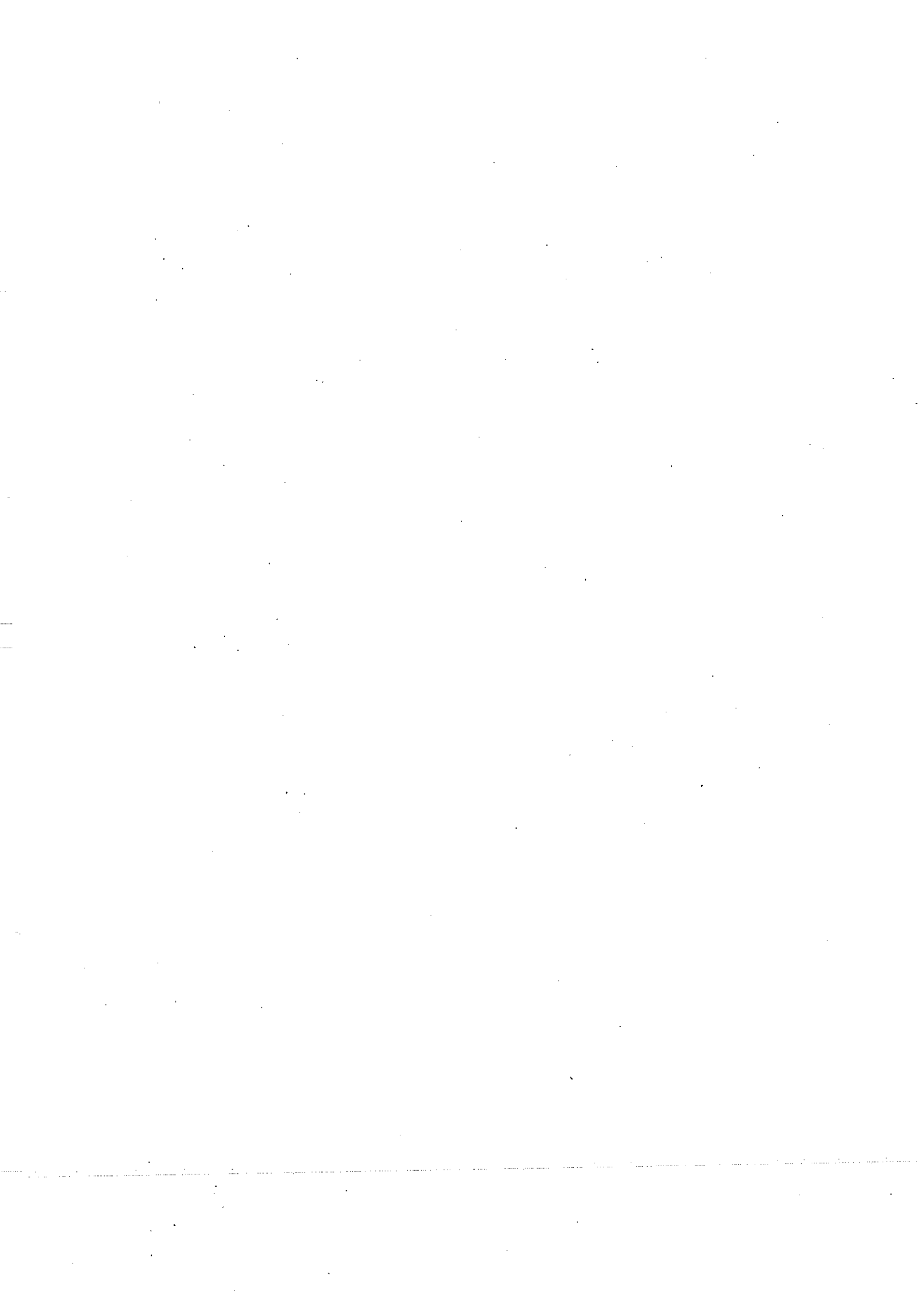
There are no cash or goods in transit between H.O.and branch at the year end.
You are required to prepare the final accounts of Lucknow crafts Ltd. after translating the branch balance by the temporal method.

OR

Q.4 A) Narrate vertical format of Balance Sheet as per revised schedule VI 10

B) Write a short note on Unclaimed Dividend 05





(3 & 7) Seat No.: _____

No. of Printed Pages : 1

SARDAR PATEL UNIVERSITY

F.Y.B.B.A – HM / TTM (SEM - I) EXAMINATION - (NC) (3 Years)

UM01CBBH08/ T08 – PRINCIPLES OF ECONOMICS

DATE-17/03/2017

DAY- FRIDAY

TIME- 02.00 AM - 04.00 PM

MARKS-60

Q: 1. What is Economics? Explain its Nature and scope. **15**

OR

Q: 1. A Explain the definition of Economics of scarcity given by Prof. L Robbins. **08**

Q: 1. B Give the difference between price and value. **07**

Q: 2. What is Demand ?explain the law of demand and factors affecting demand. **15**

OR

Q: 2. A Explain the law of supply. **08**

Q: 2. B Explain the factors affecting supply. **07**

Q: 3. A Explain the relationship between average cost and marginal cost **08**

Q: 3. B What is fixed cost, variable cost and total cost? **07**

OR

Q: 3. A What do you mean by economic cost and accounting cost. **08**

Q: 3. B Explain opportunity cost. **07**

Q: 4. Explain the short run and long run equilibrium of firm under perfect competition. **15**

OR

Q: 4. Explain the characteristics of monopoly competition and its short equilibrium of firm. **15**

— ✕ —

(3 & 7) Seat No.: _____

No. of Printed Pages : 1

SARDAR PATEL UNIVERSITY

F. Y B.B.A. (H) (HM & TM) Semester- I-NC

Saturday, 11th March 2017

02.00 pm To 04.00 pm

SUBJECT: Principles of Management for Hospitality & Tourism

Subject code-UM01CBBH09/TO9

Max Marks: 60

Note: Each question carries 15 marks

Q1 Define Management also explain features and functions of management. 15

OR

Q.1 Write a detail note on scope and importance of management. 15

Q.2 Define planning also write types and various steps of planning in detail. 15

OR

Q.2 Clarify the concept and process of decision making in detail 15

Q.3 Explain X and Y theories and Maslow's Theory of Motivation. 15

OR

Q.3 Describe the quality of good leaders Write note on various styles of leadership. 15

Q.4 Write Detail notes on. (Any two) 15

(A)Organizational environments

(B)Globalization and Management

(C)Social responsibility

(D)Multiculturalism

— X —
①

(2 & 7) Seat No. _____

No. of Pages : 2

SARDAR PATEL UNIVERSITY

March Examination, Semester - I (NC)
F.Y.B.B.A. (HM / TTM) - UM01CBBH10/T10

Subject : BASIC FRENCH

Date : Saturday, 18th March 2017

Time : 2.00 pm TO 4.00 pm

Duration : 2 hours

Total Marks : 60

Q.1 [A] Answer the following questions into French. [08]

- (1) Quel est votre nom ?
- (2) Quelle est votre nationalité ?
- (3) Quelle heure est-il ?
- (4) Vous avez quel âge ?

[B] Convert the following words into French. [07]

- (a) Yesterday (b) Good Evening (c) Mr. (g) Sorry
(d) Between (e) Miss (f) and

OR

Q.1 Write down the conjugation of "Être" verb in present, past and future tense. [15]

Q.2 [A] Write down the conjugation of following verbs. [08]

- (1) Faire (present tense)
- (2) Aller (past tense)

[B] Put the definite articles. (le, la, les, l') [07]

- (1) _____ table (2) _____ crayon (3) _____ agenda
(4) _____ valise (5) _____ vacances (6) _____ amies
(7) _____ salades

OR

Q.2 [A] Write down the following sentences into French with appropriate possessive adjectives. [08]

- (1) This is his father.
- (2) Mr. Rajubhai is our director.
- (3) It is my pen.
- (4) They are their parents.

[B] Write down the name of days in French. [07]

Q.3 Write down the conjugation of "Prendre" verb in present, past and future tense. [15]

OR

Q.3 [A] List out the any five name of countries in French. [05]

[B] Convert the following adjectives into adverbs. [05]

- (1) active (3) lent (5) rare
(2) rapid (4) facile

[C] Write down the following professions into French. [05]

- (1) Student (3) Lawyer (5) salesman
(2) Doctor (4) Nurse

Q.4 [A] Translate the following words into French. [08]

- (1) Cool (5) But
(2) Hot (6) Because
(3) Winter (7) Shirt
(4) Summer (8) Tie

[B] List out the prepositions and give at least three examples in form of sentences. [07]

OR

Q.4 Write down the conjugation of following verbs in present tense, past tense and future tense. (Any Two) [15]

- (1) Manger
(2) Acheter
(3) Boire

!.... Bonne Chance!

— ✕ —

(2)

SARDAR PATEL UNIVERSITY
B.B.A. (HM) Semester-I Examination (CBCS)
(FTM) (3 Years)

PRINCIPLES AND PRACTICES OF ACCOUNTING (UM01CBBH1) / T11

16th March, 2017

Time: 2:00 p.m. to 4:00 p.m.

Total Pages: 02
Total marks: 60

Note: Figures in the bracket to the right indicates marks.

Q-1 Discuss meaning, objectives and scope of accounting. (08)

OR

Q-1 (A) List out all accounting concepts and discuss any two of them. (08)

(B) Explain the types of account with their rules for debit and credit. (07)

Q-2 (A) Write notes on: (1) Sales Book, (2) Purchase Book, (3) Cash Book (08)

(B) Journalize the following transactions in the books of Kanha for the month of July 2016. (07)

Date

- | | |
|-----------|---|
| 1-7-2016 | Kanha commenced business with Cash Rs. 2,00,000, Building Rs. 80,000 and Goods Rs. 1,20,000. |
| 8-7-2016 | He Deposited Rs. 50,000 in to Bank to open an Account. |
| 13-7-2016 | Purchased goods of Rs. 1,00,000 with 5% Trade Discount and 2% Cash Discount and paid by Cash. |
| 18-7-2016 | Purchased Furniture of Rs. 10,000 for office and paid by cheque. |
| 20-7-2016 | Purchased goods of Rs. 30,000 from Radha. |
| 25-7-2016 | Sold goods of Rs. 70,000 for Cash. |
| 29-7-2016 | Sold goods of Rs. 40,000 to Meera. |
| 29-7-2016 | Received rent Rs. 500 |
| 30-7-2016 | Paid Rs. 3,000 for commission and Rs. 2,000 for salary. |

OR

Q-2 Mayank started business from September 2016. Following are the transaction related to her business. Prepare Journal and Ledgers and prepare trial balance. (15)

- 1) Started business with Rs. 80,000 cash and Rs. 20,000 Bank balance.
- 2) Purchased goods of Rs. 80,000 with 10% Trade Discount from Neha.
- 3) Sold goods of Rs.40,000 with 5% cash discount.
- 4) Purchased goods of Rs. 25,000 and paid cash.
- 5) Purchased furniture of Rs. 12,000 for office and paid by cheque.
- 6) Sold goods of Rs.20,000 to Ankita on 10% trade discount.
- 7) Paid wages Rs. 500
- 8) Received commission Rs. 300

Q-3 What is depreciation? Discuss the causes and methods of depreciation. (05)

OR

Q-3 Geeta Manufacturing Company purchased on 1st April 2013, Plant for Rs.14,50,000 and spent Rs.50,000 on its installation. After having used it for three years it was sold for Rs.10,00,000. Depreciation is to be provided every year at the rate of 10% per annum on the Straight Line Method. You are required to:

- 1) Show necessary calculation
- 2) Pass necessary journal entries
- 3) Prepare Machinery Account and Depreciation Account
- 4) Show how it will appear in the Balance sheet after two year as on 31st March 2015.

Q-4

The following are the balances extracted from the books of Mrs. Neha as on 31st March, 2016.

(15)

Debit Balances	Rs.	Credit Balances	Rs.
Stock (1-4-2015)	40,000	Capital	30,650
Drawings	6,250	Sales	1,90,000
Building	9,000	Purchase return	1,000
Furniture and Fittings	2,000	Discount received	150
Purchase	1,37,600	Commission	900
Wages	4,000	Bills payables	700
Carriage inward	2,250	Creditors	4,000
Sales return	1,850		
Discount	100		
Salary	7,500		
Advertisement expenses	1,250		
Rent and taxes	1,000		
General expenses	750		
Stationery and printing	450		
Cash on hand	50		
Bills receivables	1,000		
Debtors	10,000		
Bank Balance	2,350		
	2,27,400		2,27,400

Additional:

- 1) Value of closing stock as on 31st March 2016 was Rs. 2,500
- 2) Depreciate building by 10% and Furniture and fittings by 5%
- 3) Outstanding salary Rs. 100 and prepaid rent and taxes Rs. 100.
- 4) Provide 10% for bad debt reserve.
- 5) Commission accrued but not received Rs. 50.

OR

Q-4

Prepare a Balance Sheet for Joint Stock Company in horizontal format with imaginary figures. (with minimum 30 items in format)

(15)

— X —
②

(3 & 6) Seat No.: _____

No. of Printed Pages : 1

Sardar Patel University - v.v.nagar

External Examination-2016

FYBBA HM/TTM (HON) Semester –1st (NC)

Subject: Introduction to Hospitality and Tourism,

Code-UMO1CBBH12/T12

Date: ~~14/03/2017~~ 14/03/2017

Mark: 60

Day: Tuesday

Time: 2:00 To 4:00 PM

Q.1 What is the concept of "Tourism"? Explain the importance of tourism and nature of tourism. 15

OR

Q.1 What are the forms of tourism? Discuss in brief. 15

Q.2 What is "IATA"? Explain the function of IATA. 15

OR

Q.2 List out the various tourism organization. Explain "WTO" 15

Q.3 Define Guest & Host. Explain the Development of "Hotel Industry" 15

OR

Q.3 What are the different types of Hotel? Discuss in brief 15

Q.4 What are the division of "Accommodation"? Explain front office operation cycle with the help of flow chart 15

OR

Q.4 What is the organization structure of housekeeping? Explain. 15

— X —
(1)

SARDAR PATEL UNIVERSITY

F Y BBA (Honours) (HM & T&TM) (3 Years) (NO)

Semester- I Examination

2017

Monday, 20th March.

2:00 P.M. to 4:00 P.M.

SUBJECT : Human Resource Management

UM01CBBH13/T13

Total Marks : 60

Q-1 Define 'Human Resource Management'. Discuss managerial and operative (15) functions of HRM.

OR

Q-1

[A] What do you mean by Human Resource Planning? Explain the process HRP. (09)

[B] Clarify the concepts of Job Analysis, Job Description and Job Specification. (06)

Q-2 Define the term 'Recruitment' and 'Selection'. Describe the process of selection. (15)

OR

Q-2

[A] Explain the importance of Training. (08)

[B] Differentiate between Training and development. (07)

Q-3 Clarify the concepts of 'Promotion', 'Transfer' and 'Demotion'. Discuss the (15) purpose of promotion and transfer.

OR

Q-3

[A] Define 'Performance Appraisal'. Explain limitations of performance appraisal. (08)

[B] Discuss objectives of Job Evaluation. (07)

Q-4 Write Short Notes (Any two) (15)

1. Functions of HRD manager
2. Need and importance of HRD
3. Dual Career Groups
4. Employees for lease
5. Recent Trends in HRM

(4 & 9)

Seat No.: _____

No. of Printed Pages : 3

SARDAR PATEL UNIVERSITY
F.Y. B.B.A (Hon) 4 Years Examination, I Semester (NC)
THURSDAY, 16 March, 2017
02:00 p.m. to 04:00 p.m.

UM01CBBH/TO5:- Accounting for Hospitality & Tourism Travel Mgt

Total Marks: 60

- Note: 1. Figures to the right indicate marks of the questions.**
2. Answers should be precise and to the point.

- Q-1 [A] Define "Accounting". Explain the objectives of Accounting. (07)
[B] Write short note on:- (08)
(1) Business Entity Concept
(2) Going concern Concept

OR

- Q-1 [A] Briefly explain the following basic principles of Accounting. (06)
(1) Matching Principle
(2) Convention of Consistency
[B] Distinguish between Capital & Revenue Expenditure (05)
[C] Classify the various Accounts with its debit/credit rules. (04)
- Q-2 [A] Define Journal. Write the importance of Journal. (05)
[B] Enter the following transactions in the book of Shri Raman for the month of July 2016. (10)

- August
2015 1 Raman started business with cash RS. 12,000, furniture
RS. 5000 & stock of goods of RS.2000.
" 6 Bought goods of RS. 10000 at 10% trade discount from
Shivali, on the condition that 5% cash discount will be
allowed if payment is made within 15 days. Paid half the
amount by cheque.
" 9 Sold goods on credit to Rita RS. 3000 & to Reena for
cash RS. 2000.
" 11 Raman paid RS. 1000 for his son's tuition fees.
" 14 Given goods worth RS. 500 to flood relief fund.
" 17 Received an order from Raj for supplying goods RS.
2000.
" 18 Drew for personal use out of bank RS. 3000 & paid bank
charges RS. 100.
" 20 Paid salary in cash to Sneha RS. 1000 & paid cheque
Rs.1000 for stationery.
" 25 Deposited Rs 3000 in Bank..
" 27 Paid salary Rs 5000 by cheque..

OR

1

(P.T.O.)

Q-2 [A] Define Subsidiary. Write in brief various subsidiary books. (05)

[B] Post the following journal entries into the ledger and find out the balance:- (10)

Date	Particulars	L.F	Debit RS.	Credit RS.
2013 May, 1	Cash A/c Dr To Capital A/c		33000	33000
" 3	Purchase A/c Dr To Radhey A/c		15000	15000
" 4	RadheyA/c Dr To Cash A/c		10000	10000
" 7	Furniture A/c Dr To Cash A/c		2500	2500
" 10	Ashish's A/c Dr To Sales A/c		12000	12000
" 12	Rent A/c Dr Carriage A/c Dr To Cash A/c		1000 250	1250
" 15	Cash A/c Dr To Sales A/c		8000	8000
" 20	Sales-return A/c Dr To Ashish's A/c		800	800
" 22	Cash A/c Dr To Ramesh's A/c		5000	5000
" 24	Salary A/c Dr To Cash A/c		1200	1200
" 27	Cash A/c Dr To Ashish's A/c		8000	8000
" 31	Dhara's A/c Dr To Cash A/c		3000	3000
	Total		99750	99750

Q-3[A] Define "Depreciation". Briefly explain the causes of depreciation. (05)

[B] Het ltd. has purchased machinery of RS. 48,000 on 1-04-2012. Installation charges paid RS. 2000. Rate of depreciation is 10% p.a. company follows SLM method of depreciation. Another transactions are as follows:- (10)

On 1-10-2012 Second machinery purchased RS. 60,000.

On 1-04-2013 Third machinery purchased RS 40,000.

On 1-10-2014 First machinery sold by 10% loss.

Prepare Machinery & Depreciation A/c up to 31-03-2014.

OR

Q-3 [A] Write a short note on Causes of Depreciation. (05)

[B] Ankit ltd. has purchased machinery of RS. 58,000 on 1-04-2012 with installation charge of RS. 2000. Depreciation rate is 10% as W.D.V method. On 31-03-2015 they sold machinery at 10% loss. Prepare Machinery & Depreciation a/c for three years. (10)

- Q-4 From the following Trial balance of Shri Vidhi, prepare trading a/c, profit & loss a/c for the year ending 31-03-2016 & balance sheet as on that date. (15)

Debit Balances	Amount	Credit Balances	Amount
Sundry Debtors	31,000	Capital	1,25,000
Purchase	70,000	Sundry Creditors	21,000
Discount	3,000	Sales	1,35,000
Productive wages	17,500	6% Loan (1-7-2012)	38,000
Motorcar	5,000		
Stock (1-4-2012)	58,500		
Salaries	12,000		
Traveling Expenses	5,000		
Carriage Inward	2,350		
Insurance	5,550		
Commission	1,425		
Machinery	45,000		
Building	20,000		
Rent & Taxes	6,000		
Cash on hand	2,500		
Bank Balance	24,170		
Repairs	550		
Sundry Expenses	1,955		
Interest on 6% Loan	1,500		
Advertisement Expenses	6,000		
	3,19,000		3,19,000

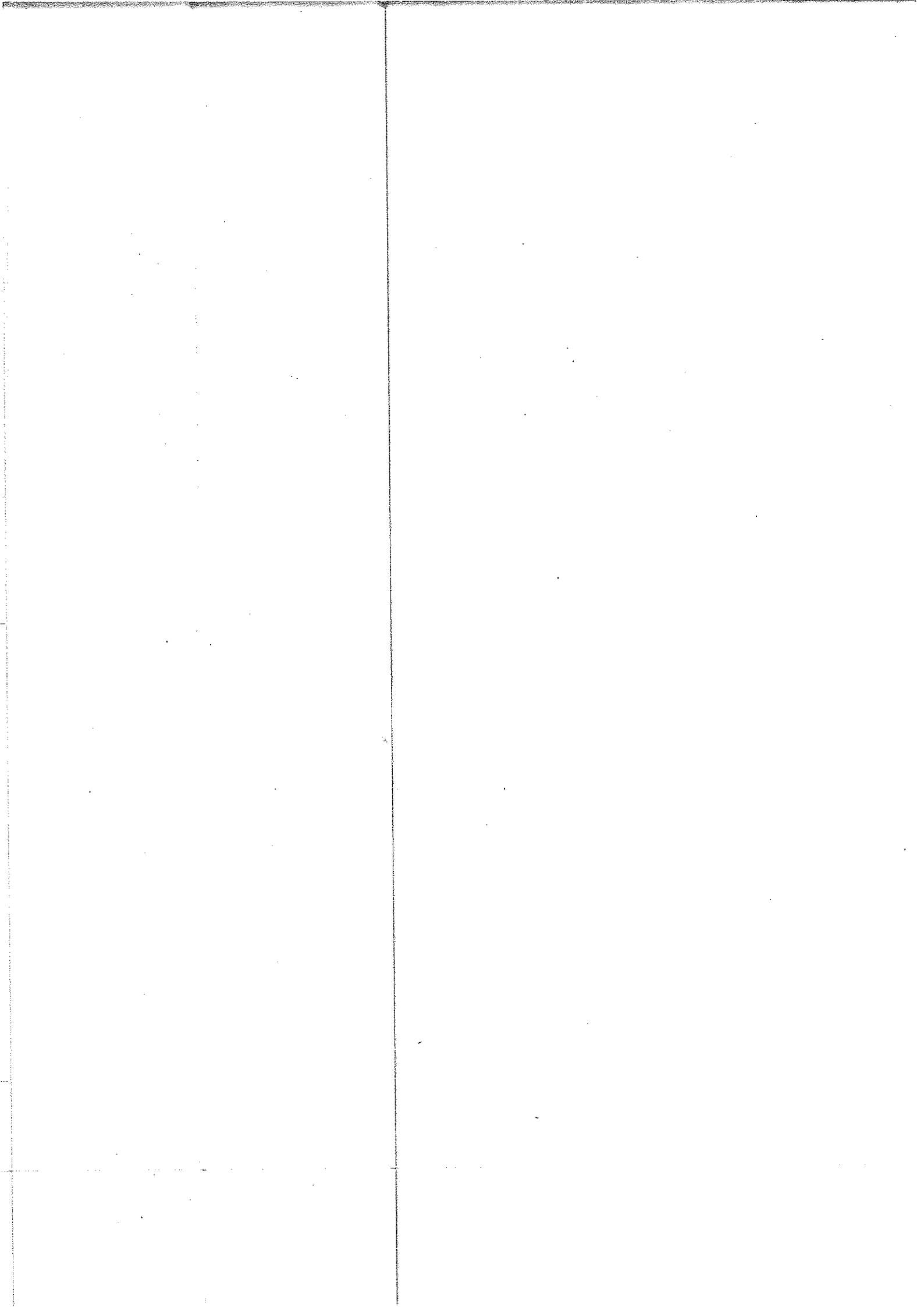
Adjustment:-

- (1) Closing stock is valued at RS.80, 000 on 31-3-2013.
- (2) Depreciation Building by 2.5%, Machinery by 5% & Motorcar by 7.5%. There was an addition of RS. 5,000 to Building on 1-10-2012.
- (3) Prepaid rent & taxes RS. 400
- (4) Provide reserve for discount 2.1/2% on debtors & creditors.
- (5) Outstanding Insurance RS. 200.
- (6) Provide Reserve for Bad-debts RS. 1,500.
- (7) 60% advertisement expenses are carried forward to next year.

OR

- Q-4 Draw the specimen of Profit and loss account , Profit and loss App Account and Balance sheet with imaginary figures. (15)

— X —



(5) Seat No.: _____

No of Printed Pages :1

SARDAR PATEL UNIVERSITY
FYBBA-ITM First Semester EXAMINATION CBCS (4 Years)
June 2011 Batch onwards (NC)
15/3/2017 (Wednesday)
Computer Organization (UM01CBB103)

Time: 2.00 pm – 4.00 pm

Total Marks: 60

- Q.1**
(A) Write a short note EBCDIC Code. [7]
(B) Explain Octal to Decimal conversion by taking appropriate example. [8]
OR
- Q.1**
(A) What is Hamming distance? Generate Hamming Code for the character "B" by using odd parity bit method. [7]
(B) Explain Integer Storage representation method by taking appropriate example. [8]
- Q.2**
(A) Explain Pipeline Machines and Array Processor. [7]
(B) Write a short note on Immediate addressing and Direct Addressing. [8]
OR
- Q.2**
(A) Explain Data Path of typical von- Neumann machine. [7]
(B) Explain Indirect addressing and Register Addressing. [8]
- Q.3**
(A) Write a short note on RAM and ROM. [7]
(B) Write a short note on Hard Disk. [8]
OR
- Q.3**
(A) Write a short note on VDU. [7]
(B) Write a short note on Ink Jet Printer. [8]
- Q.4**
(A) List and Explain the Instruction set in SAP-1 Architecture. [7]
(B) Draw the diagram of SAP-1 Architecture. Explain Program Counter and Instruction Register. [8]
OR
- Q.4**
(A) Explain Execution cycle for LDA routine. [7]
(B) Draw the diagram of SAP-1 Architecture. Write a short note on Fetch Cycle. [8]

*****All the Best*****

— X —
①

(6) Seat No: _____

No. Of printed pages: 02

SARDAR PATEL UNIVERSITY
B.B.A. (ITM) (4 Years) EXAMINATION
SEMESTER – I (NC)
Saturday, 18th March 2017
UM01CBBI07: BUSINESS MATHEMATICS

Time: - 2.00 p.m. to 4.00 p.m.

Total Marks: - 60

Q.1

- (a) Define following terms with example: 05
1. Intersection of two sets
 2. Subset
- (b) State and Verify De 'Morgan laws for two sets A and B by taking 05
 $U = \{a, b, c, d, e, f, g, h, i\}$, $A = \{a, b, c, e, f\}$, $B = \{e, d, f, g\}$
- (c) Express the inequality in a Modulus form: $-2 < x < 9$ 05

Q.1

OR

- (a) Let $A = \{x / -1 < x < 6, x \in Z\}$, $B = \{2, 4, 5\}$ and $C = \{1\}$ then 05
- (1) Compute : $B \times C$
 - (2) Verify that $A \cup (B \cap C) = (A \cup B) \cap (A \cup C)$.
- (b) If $A =$ set of the letters of the word 'WHAT', $B =$ set of the letters of the word 'HEAT' and $C =$ set of the letters of the word 'EATA'. 05
Then find $B \times (A - B)$ and $C \times C$.
- (c) Express in the form of an interval: $|x - 3| < 5$ 05

Q.2

- (a) Explain following terms with example: 05
1. Transpose matrix
 2. Symmetric matrix
- (b) If $A = \begin{bmatrix} 4 & -1 \\ -1 & 3 \\ 2 & 0 \end{bmatrix}$, $B = \begin{bmatrix} -2 & 5 \\ 3 & -1 \\ 5 & 2 \end{bmatrix}$ and $C = \begin{bmatrix} 2 & 4 \\ -1 & -5 \\ 3 & -2 \end{bmatrix}$, 05
Then find 1. $A + C$ 2. $A + B + C$ 3. $2A - 3B + C$
- (c) Solve the following equations by using Cramer's rule: 05
 $2x + y = 4$, $5x + 3y = 9$

Q.2

OR

- (a) Solve the following equations by Inverse of matrix: 05
 $2x + 3y = 10$, $x + 6y = 4$
- (b) If $A = \begin{bmatrix} 5 & 4 \\ 3 & 2 \end{bmatrix}$ Then find $A^2 - 3A + 14I$. 05

- (c) If $A = \begin{bmatrix} 1 & 1 & 3 \\ 2 & 3 & 1 \\ 3 & 1 & 2 \end{bmatrix}$ and $B = \begin{bmatrix} 1 & 1 & 2 \\ 2 & 4 & 1 \\ 1 & 2 & 2 \end{bmatrix}$, then find AB and BA . 05

Q.3

- (a) Show that the equation of a line having slope m and Y - intercept c is $y = mx + c$. 05
- (b) Find the equation of a line passing through the point $(-1, 4)$ and making equal intercepts on the co-ordinate axes. 05
- (c) Find a , if the distance between $(a, -4)$ and $(-8, 2)$ is 10. 05

OR

- (a) Find the equation of a line which is Parallel to the line $2x - 3y - 5 = 0$ and passing through the point $(4, 5)$. 05
- (b) Find the equation of a line whose slope is 3 and which passes through the intersection of the lines $x - 4y + 18 = 0$ and $x + y - 12 = 0$. 05
- (c) Given $A(2,4), B(6,8)$ and $C(a + 4, 2a + 6)$ and $\overline{AC} \perp \overline{AB}$, Find a . 05

Q.4

- (a) State working rules for limit. 03
- (b) Evaluate following: 12

1. $\lim_{x \rightarrow 3} \frac{x^2 - 9}{x - 3}$
2. $\lim_{x \rightarrow 1} \frac{\sqrt{x + 2} - \sqrt{3}}{x - 1}$
3. $\lim_{n \rightarrow \infty} (\sqrt{n^2 + n + 1} - \sqrt{n^2 + 1})$

OR

- Q.4 Evaluate following: 15

1. $\lim_{x \rightarrow 2} \frac{x^3 - 3x^2 + 3x - 2}{x - 2}$
2. $\lim_{x \rightarrow 0} \frac{2^x - 3^x}{x}$
3. $\lim_{x \rightarrow 2} \frac{x^3 - 8}{x - 2}$

— ✕ —

(2)

(06) Seat No.: _____

No. of Printed Pages : 1

SARDAR PATEL UNIVERSITY

B.B.A. (ITM) (SEMESTER: 1) EXAMINATION (NC)

2017

Saturday, 11th March

2:00 P.M. To 4:00 P.M.

UM01CBBI09: PRINCIPLES OF MANAGEMENT

Total Marks: 60

- Note: 1. Figure to the right indicate full marks of question.
2. All questions carry equal marks.

Q-1 (A) Define the term management and explain various levels of management. [08]

(B) Explain- Management as a Process [07]

OR

Q-1 (A) Distinguish between Management and Administration. [08]

(B) Discuss significance of management. [07]

Q-2 Define the term Planning and elucidate its nature and importance of planning. [15]

OR

Q-2 (A) Discuss the steps in Planning process in detail. [10]

(B) List out constraint in Planning and explain any four. [05]

Q-3 Give meaning of organizing and elaborate its process and principles. [15]

OR

Q-3 (A) Distinguish : Centralization and Decentralization [08]

(B) Write a note on: Line and Staff organization structure. [07]

Q-4 What is motivation? Why is it important? Discuss in detail theory of motivation given by Maslow. [15]

OR

Q-4 (A) Explain in brief barriers to effective communication. [08]

(B) Explain the steps in the process of controlling. [07]

All the Best

— ✕ —
(1)

SARDAR PATEL UNIVERSITY
B.B.A. (ITM) SEMESTER: I (NC) EXAMINATION (3 YEARS)
2017
Thursday, 16th March
02:00 P.M. To 04:00 P.M.
UM01CBB10: ACCOUNTING FOR MANAGEMENT

Total Marks: 60**Note:** 1. Figure to the right indicate full marks of question.

2. All questions carry equal marks.

3. Working notes are the part of answer.

Q-1 Define the term accounting and explain its advantages and limitation of accounting [15]

OR

Q-1 (A) State types of account and explain it with rules of debit and credit. [10]

(B) Difference between capital expenditure and revenue expenses. [05]

Q-2 Journalise the following transactions; post the same in relevant ledger account and prepare trial Balance in the books of Shri R.M. Patel For October, 2016: [15]

1. Start business with: Cash Rs.10,00,000, Stock Rs. 5,00,000 and Furniture Rs. 1,10,000.
2. Open Bank account by depositing Rs. 2,00,000.
3. Purchased goods for Rs 25000 @ 10% trade discount from Sanjay.
4. Sold goods of Rs 60,000 @ 5% trade discount and at 10% cash discount to Purani.
5. Machinery was purchased of Rs 50,000 and paid by cheque, the installation charges of Rs 11,000 paid in cash.
6. Purani declared insolvent and 50 paise per rupee received as final dividend.
7. Paid fire insurance premium Rs. 200 by cheque.

OR

Q-2 (A) Write journal enties from the following information provided by Shri R P Patel: [07]

1. R P Patel started business with a capital of Rs 10,000.
2. He purchased goods from Mohan on credit Rs 2,000.
3. He paid cash to Mohan Rs 1,000.
4. He sold goods to Suresh Rs 2,000.
5. He received cash from Suresh Rs 3,000.
6. He further purchased goods from Mohan Rs 2,000.
7. He paid cash to Mohan Rs 1,000.

(B) Explain the types of errors affecting and not affecting trial balance. [08]

Q-3 From the following Trial Balance of Radhe Shyam Trading and Profit and Loss A/c for the year ending 31st December, 2016 and Balance Sheet as on that date. The Closing Stock on 31st December, 2016 was valued at Rs. 2,50,000. [15]

Debit Balances	(Rs.)	Credit Balance	(Rs.)
Stock (1-1-2016)	2,00,000	Sundry Creditors	1,50,000
Purchases	7,50,000	Purchases Return	30,000

Sales Return	80,000	Sales	25,00,000
Freight and Carriage	75,000	Commission	33,000
Wages	3,65,000	Capital	17,00,000
Salaries	1,20,000	Interest on Bank Deposit	20,000
Repairs	12,000	B/P	62,000
Trade Expenses	40,000		
Rent and Taxes	2,40,000		
Cash in Hand	57,000		
B/R	40,000		
debtors	5,50,000		
Plant and Machinery	16,00,000		
Withdrawals (Drawings)	1,66,000		
Bank Deposit	2,00,000		
	44,95,000		44,95,000

OR

Q-3

From the following balances prepare Final Accounts as on 31st December, 2016

[15]

Particulars	Rs.	Particulars	Rs.
Opening Stock	1,53,100	Capital	25,00,000
Purchase	8,24,000	Drawings	4,80,000
Sales	25,60,000	Sundry Debtors	5,70,000
Returns (Dr.)	40,000	Sundry Creditors	1,40,000
Returns (Cr.)	24,000	Depreciation	42,000
Factory Rent	1,80,000	Charity	5,000
Custom Duty	1,15,000	Cash Balance	44,600
Coal, Gas and Power	60,000	Bank Balance	40,000
Wages & Salary	3,66,000	Bank Charges	1,800
Discount (Dr.)	75,000	Establishment Expenses	36,000
Commission (Cr.)	12,000	Plant	4,20,000
Bad-Debts	58,500	Leasehold Building	15,00,000
Bad-Debts Recovered	20,000	Goodwill	2,00,000
Apprentice Premium	48,000	Patents	1,00,000
Productive Expenses	26,000	Trade Marks	50,000
Unproductive Expenses	50,000	Loan Cr.	2,50,000
Carriage	87,000	Interest on Loan	30,000

The value of Closing Stock on 31st December, 2016 was Rs. 2,54,000.

Q-4 (A) Alpesh limited issued 1000 equity shares of Rs.100 each at a premium of Rs.20 per share. The share capital was to be collected as follows: [10]

On applications Rs.15
 On allotment Rs.55 (including premium)
 On first call Rs.25
 On final call Rs.25

Company received 1200 share application money and excess applications were rejected. Shri A who allotted 200 shares failed to pay the final call. Draft necessary journal entries to record the above transaction.

(B) Write a note on over and under subscriptions of shares.

[05]

(2)

OR

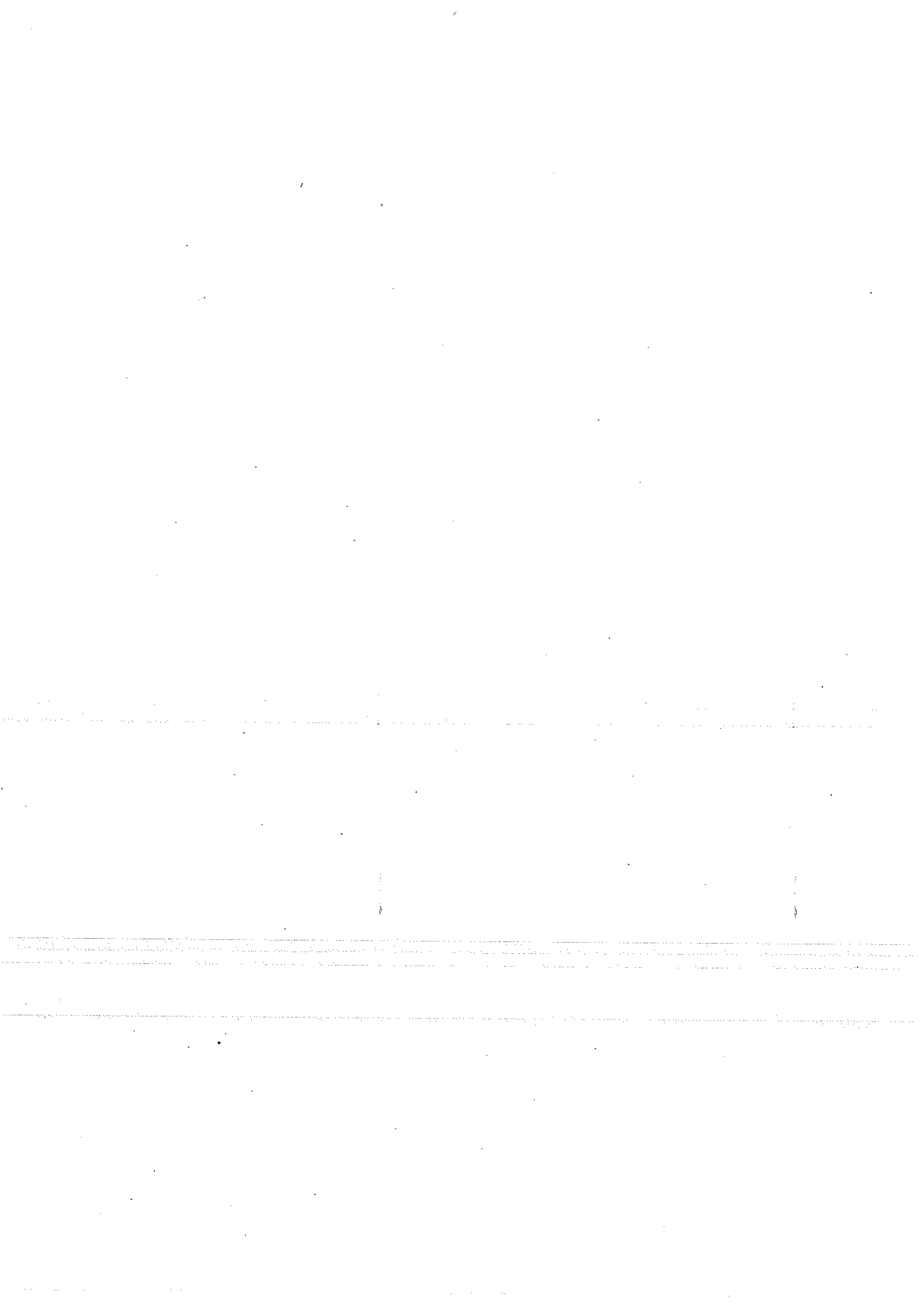
Q-4 Venus Limited issued 20000 Equity Shares of RS. 10 each payable as under: [15]

On Application Rs.2 per share, On Allotment Rs.3 per share, On First Call Rs.2.50 per share, On Final Call Rs.2.50 per share.

Applications were received for 30000 shares and allotment made pro-rata to the applications of 24000 shares and the remaining applications were refused and the amount was refunded. All the moneys due were received except that the shareholder Mr. PAPPU to whom 2000 shares were allotted failed to pay the first and final call money. Pass journal entries & Prepare Calls-in-Arrears Account.

ALL THE BEST

— X —
③



(5) Seat No. _____

No. of printed pages: 01

SARDAR PATEL UNIVERSITY

FYBBA-ITM 3 years (Semester – I) EXAMINATION (NC)

Personal Computer & Software Packages [UM01CBB11]

DATE: 14/03/2017, Tuesday TIME: 2:00P.M. TO 4:00P.M. Total Marks: 60

- Q.1 [A] Explain Font formatting facility of MS WORD. [08]
[B] Explain Mail Merge Facility. [07]

OR

- Q.1 [A] Describe search and replacement facility of MS WORD. [08]
[B] Explain PRINT option of MS WORD. [07]

- Q.2 [A] Describe SUM() and AVERAGE() functions of MS EXCEL. [08]
[B] Define EXCEL. Explain advantages of MS EXCEL. [07]

OR

- Q.2 [A] Explain POWER() and MAX() functions of MS EXCEL. [08]
[B] Explain graph plotting facility of MS EXCEL. [07]

- Q.3 [A] Explain views of PowerPoint. [08]
[B] Describe Slide Transition. [07]

OR

- Q.3 [A] Define PowerPoint. Explain Hyperlink. [08]
[B] Describe Custom Animation. [07]

- Q.4 [A] Define ACCESS. Explain advantages of MS ACCESS 2007. [08]
[B] Explain SQL SELECT query with WHERE CLAUSE. [07]

OR

- Q.4 [A] Explain Field and its datatypes. [08]
[B] Describe simple SQL SELECT query with appropriate example(s). [07]

All the Best

— X —
①

(5) Seat No.: _____

No. of Printed Pages : 1

SARDAR PATEL UNIVERSITY

BBA(ISM) – Ist SEMESTER (NC)

Saturday, 11/03/2017

TIME: - 2.00 TO 4.00 PM

UM01CBBS01- Principles of Management

TOTAL MARKS: -60

Q.1 What is Management? Discuss in brief process of Management. (15)

OR

Q.1 (A) Discuss in detail significance of Management. (10)

(B) Write down difference between Management & Administration. (05)

Q2 What is Planning? Discuss in detail Planning premises. (15)

OR

Q.2 Discuss in detail process & importance of Planning. (15)

Q.3 What is organising? Discuss in detail various principles of organizing. (15)

OR

Q.3 What is Centralization & Decentralization? Discuss in detail out of any one advantage & disadvantages of organization. (15)

Q.4 (A) What is Motivation? Discuss in detail Maslow's theory of motivation. (08)

(B) What is Communication? Discuss in detail principles of effective communication. (07)

OR

Q.4 (A) What is leadership? Discuss in detail Autocratic leadership & Democratic leadership. (08)

(B) What is Controlling? Discuss in detail process of controlling. (07)

— X —
①

(4) Seat No. _____

No. of Printed Pages : 1

SARDAR PATEL UNIVERSITY
BBA(ISM) -1st SEM Examination (NC)
Logical Organization Of Computers (UM01CBBS02)

Date: 14/03/2017, Tuesday

Time: 2.00 P.M TO 4.00 P.M

Total Marks: 60

Q-1 [A] Explain Block Diagram of a simple Computer and its different functional units. [07]

[B] Convert following number System [08]

i) $(AF8)_{16} = (?)_8$ ii) $(10110110)_2 = (?)_{10}$

iii) $(25)_8 = (?)_{10}$ iv) $(157)_8 = (?)_{16}$

OR

Q-1 [A] Explain Signed Magnitude, 1's Complement & 2's Complement? [07]

[B] Explain Hamming code method & Number System with suitable examples. [08]

Q-2 [A] What is Boolean algebra? Explain in brief postulates of Boolean Algebra. [07]

[B] Prove the D'Morgan's theorem by method of perfect induction. [08]

OR

Q-2 [A] What is the difference between i) OR and XOR Gates

ii) AND and NOT Gates

in detail with Circuit diagram & Truth table. [07]

[B] Prove the following theorem i) $X + X \cdot Y = X$ $X \cdot (X + Y) = X$ [08]

ii) $\overline{\overline{A}} = A$

Q-3 [A] Explain in detail processor function with diagram? [07]

[B] Explain Instruction level parallelism in detail with diagram.. [08]

OR

Q-3 [A] Explain Processor level parallelism in detail with diagram. [07]

[B] What is the difference between Arithmetic Logic Unit & Registers. [08]

Q-4 [A] Explain ROM, RAM, PROM, and EROM in detail. [07]

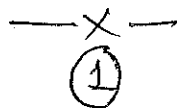
[B] What is the difference between Dot-Matrix printer and Ink-Jet Printer. [08]

OR

Q-4 [A] What is MOUSE? Explain different types of MOUSE. [07]

[B] Explain in detail : i) Hard - Disk ii) Scanners [08]

BEST OF LUCK



(6) Seat No.: _____

No. of Printed Pages : 4

SARDAR PATEL UNIVERSITY
BBA (ISM).(SEMESTER - I) EXAMINATION 2017 (NCL)
THURSDAY, 16 MARCH 2017
2:00 PM to 4:00 PM
UM01CBBS05 – ACCOUNTING FOR MANAGEMENT

Total Marks: 60

Q.1 (A) Define Accounting and Explain its Objectives? 08

(B) What are the Types of Account? Explain with Illustration? 07

OR

Q.1 (A) What are the Rules of Debit and Credit? And Explain its Areas (Branch) of Accounting? 10

(B) Explain in brief any five of the following Terms. 05

1. Creditor
2. Drawings
3. Debtors
4. Reserve and Provision
5. Insolvent
6. Discount
7. Capital
8. Fictitious Assets

Q.2 (A) Define accounting standard. State it's important. 05

(B) Write a note on: 10

1. Money measurement concept
2. Going concern concept
3. Materiality concept

OR

Q.2 (A) Enlist international financial reporting standards (IFRS) 05

(B) Write short note on 10

1. General Accounting Principle.
2. Business entity concept.
3. Accounting period concept.

Q.3 SHISHIR Start a New Business Transaction for the Month of March, 2004 is given below. 15

①

(P.T.O)

Journalize the Transaction.

2004 March,

- 1: Commenced Business with Cash RS 9000, Furniture RS 750, Stock of Goods RS 400 and Creditors of Rs150.
- 1: Expanses incurred in Inauguration of Shop RS 300.
- 3: Opened Bank Account with RS 4000.
- 5: Bought from Shamik Goods 200 k.g at RS 10 per kilo at a Trade Discount of 10 % and Cash Discount of 5% and paid the amount by Cheque.
- 8: Goods Purchased from Shamik now sold to Shailesh at a Profit of 20% on Cost.
- 10: Purchased Stationery of RS 100 from Shailendra Stationery Mart.
- 13: Paid Life Insurance Premium RS 300 and Fire Insurance Premium of Rs. 200 by Cheque.
- 14: Received a Cheque of RS 1660 from Shailesh on Account.
- 16: Cheque Received from Shailesh paid in to the Bank.
- 18: Purchased 100 kg of Goods at RS 5 per kg from Auction.
- 19: Withdrawn Goods of RS 20 from Shop and Withdrawn from Bank RS 280 for Personal use.
- 21: Paid Salary to the Munim RS 200 in Cash and paid Rent RS 150 by Cheque.
- 25: Amount due by Shailesh is written off as he is declared Insolvent.
- 27: Purchased a Machine for RS 500 and paid Installation charges RS 10 the total amount is paid in Cash.
- 29: Paid Advertisement bill of RS 50 Cash.

OR

2

- Q.3 Record the Following Transaction of SHRI JAYMIN PARIKH, in his Journal, post them to Ledger Accounts, find out the Balances and say whether they are Debit or Credit Balances and also prepare Trial Balances: (15)

1999

May, 1 Jaymin Started Business with Cash Rs.50000

- 3 Purchased Goods of Rs.15000 at Trade Discount of 10% from Jasmin.
- 5 Jasmin paid Rs.10000 on Account.
- 7 Sold Goods of Rs.8000 to Jaimini at Rs.7000 for Cash and Opened Bank Account with that Amount.
- 9 Purchased a Typewriter for Rs.8500.
- 10 Sold Goods for Cash at a Trade Discount of 10% to Jayshree Rs.12000.
- 14 Sold Goods of Rs.5000 Purchased from Jasmine to Jigar at a Profit of 10 %.
- 18 Jigar Returned Goods of Rs.1100 which we Returned to Jasmine.
- 24 Received Rs.3000 by a Crossed Cheque from Jigar.
- 31 Paid Rs.1500 for Rent by a Cheque.

- Q.4 Shri Patil Bansali submitted to you the following Trial Balance. Prepare Trading A/c, Profit & Loss A/c for the year ended 31-12-2000 and a Balance Sheet as on that date after giving effect to the under mentioned adjustments: (15)

NAMES OF ACCOUNT	DEBIT	CREDIT
Capital	-	16000
Opening Stock	17500	-
Drawings	3305	-
Return Inward	550	-
Carriage Inward	1240	-
Deposit with X	1400	-
Return Outward	-	840
Carriage Outward	725	-
Rent Paid	800	-
Rent Outstanding	-	150
Purchases	13000	-
Sundry Debtors	5000	-
Sundry Creditors	-	4000
Furniture	1500	-
Sales	-	29000
Wages	850	-
Cash	1370	-
Goodwill	1800	-
Advertisement	950	-
	49990	49990

Adjustments :

- (1) Closing stock on 31st December, 2000 is valued at Rs.18790.
- (2) Write off Rs.600 as Bad Debts and make Reserve for Bad Debts on Sundry Debtors at 5%.
- (3) Stock Value at Rs.2000 was destroyed by fire on 25th December, 2000, but Insurance Company admitted a claim for Rs.1500 only and paid sum in January 2001.
- (4) Depreciate Furniture by 10%.

Q.4 (A) With imaginary figures give a Specimen of Trading Account, profit and Loss Account And Balance Sheet. 10

(B) Give Difference between Trial Balance and Balance Sheet. 05

— X —

4

(5) Seat No: _____

No. of Printed Pages : 4

SARDAR PATEL UNIVERSITY
B.B.A(ISM) (I-SEMESTER EXAMINATION) (NC)

Friday 17th March 2017

2:00 P.M to 4:00 P.M

Micro Economics (UM01CBBS06)

Total marks 60

Note: - Figure to the right indicates marks.

Draw diagrams and cite examples wherever necessary.

- Q-1 Critically examine Robin's definition of economics. Discuss its limitation. (15)
- OR
- Q-1(A) What is economics? Explain the nature and scope of economics. (08)
- (B) Explain Subject matter of economics. (07)
- Q-2 Explain the concept of consumer's surplus and standard of living. (15)
- OR
- Q-2(A) Explain in detail basic assumption of economics. (08)
- (B) What is Goods? Explain different types of goods (07)
- Q-3(A) Explain the law of demand with the help of diagram. (08)
- (B) Discuss change in demand and shift in demand. (07)
- OR
- Q-3(A) Explain determinants of supply and exception to the law of supply. (08)
- (B) Discuss equilibrium price with the demand curve and supply curve. (07)
- Q-4 Discusses economies and diseconomies of scale in detail. (15)
- OR
- Q-4(A) Explain concept of rent, wages, interest and profit. (08)
- (B) Why long run average cost curve is U shape? Explain. (07)

— X —

(1)

(4) Seat No.: _____

No. of Printed Pages: 02

SARDAR PATEL UNIVERSITY
BBA (ISM) EXAMINATION
SEMESTER - I (NC)

Saturday, 18th March 2017

UM01CBBS07: BUSINESS MATHEMATICS

Time: - 2.00 p.m. to 4.00 p.m.

Total Marks: - 60

Q.1

- (a) Solve: $|x - 4| = 0.1$ 04
- (b) If $U = \{x: 1 \leq x \leq 10, x \in N\}$, $A = \{1, 2, 7, 4, 5\}$, $B = \{2, 3, 9, 6, 7, 8\}$ and $C = \{3, 4, 5, 6\}$, then find $A \cup B$, $B \cap C$, $B - C$, $A \Delta C$ and A' . 05
- (c) If $U = \{1, 2, 3, 4, 5, 6, 7, 8, 9, 10, 11\}$, $A = \{1, 2, 5, 6, 9\}$ and $B = \{2, 4, 6, 8\}$ then Verify: (1) $(A \cup B)' = A' \cap B'$ (2) $(A \cap B)' = A' \cup B'$ 06

Q.1

OR

- (a) Define the terms with example: (1) Union of two sets (2) Intersection of two sets 04
- (b) Express the following inequalities in a Modulus form: $-4 < x < 3$ 05
- (c) Express (1) 0.023023023 and (2) 2.020202.... into quotient form. 06

Q.2

- (a) If $A = \begin{bmatrix} -4 & 2 \\ -5 & 3 \end{bmatrix}$ and $B = \begin{bmatrix} 4 & -3 \\ 3 & -1 \end{bmatrix}$, then verify that $(A + B)^T = A^T + B^T$. 04
- (b) If $A = \begin{bmatrix} 4 & -1 \\ -1 & 3 \\ 2 & 0 \end{bmatrix}$, $B = \begin{bmatrix} -2 & 5 \\ 3 & -1 \\ 5 & 2 \end{bmatrix}$ and $C = \begin{bmatrix} 2 & 4 \\ -1 & -5 \\ 3 & -2 \end{bmatrix}$,
Then find 1. $A - C$ 2. $A + B + C$ 3. $3A - 2B + C$ 05
- (c) Solve the equations by Inverse of matrix: $3x - 2y + z = 2$ 06
 $x + 3y - 2z = 2$
 $2x - y + z = 2$

OR

Q.2

- (a) Define the terms with example: (1) Zero Matrix (2) Transpose Matrix 04
- (b) Solve the following equations by Cramer's Rule: $2x + y = 4$, $5x + 3y = 9$ 05
- (c) If $A = \begin{bmatrix} 1 & 1 & 3 \\ 2 & 3 & 1 \\ 3 & 1 & 2 \end{bmatrix}$ and $B = \begin{bmatrix} 1 & 1 & 2 \\ 2 & 4 & 1 \\ 1 & 2 & 2 \end{bmatrix}$, then find AB and BA . 06
Also check whether $AB = BA$ or not.

Q.3

- (a) Check whether or not the points $(1, -3)$, $(-6, 6)$ and $(8, 0)$ are collinear. 04
- (b) Find the area of triangle having the vertices: $A(-3, 2)$, $B(1, -2)$, $C(5, 6)$. 05
- (c) Find the equation of a line passing through the point $(-2, 7)$ and making equal intercepts on the co-ordinate axes. 06

(1)

(P.T.O.)

OR

Q.3

- (a) Find x if $d\{(x, -4), (-8, 2)\} = 10$. 04
- (b) Find what values of k , the lines $3x - (3k + 2)y + 2 = 0$ and $2x - (k - 3)y - 1 = 0$ are 05
1. Parallel?
 2. Perpendicular?
- (c) Show that the equation of a line having slope m and passing through $A(x_1, y_1)$ is 06
- $$y - y_1 = m(x - x_1).$$

Q.4

- (a) Evaluate following: 12
1. $\lim_{x \rightarrow 2} \frac{\sqrt{x+7}-3}{x-2}$
 2. $\lim_{x \rightarrow 3} \frac{x^2-9}{x-3}$
 3. $\lim_{n \rightarrow \infty} (\sqrt{n^2 + n + 1} - \sqrt{n^2 + 1})$
- (b) Write working rules for Limit. 03

OR

Q.4

- (a) Evaluate following: 15
1. $\lim_{x \rightarrow 1} \frac{x^3 - 2x^2 + 2x - 1}{x - 1}$
 2. $\lim_{n \rightarrow \infty} (1 + \frac{3}{n})^n$
 3. $\lim_{x \rightarrow 0} \frac{5^x - 3^x}{x}$

— ✕ —

(3) Seat No.: _____

No. of Pages: 01

SARDAR PATEL UNIVERSITY
B.B.A (ITM) (3 Years) (SEMESTER I) EXAMINATION (NC)
Monday, 20th March, 2017
2:00 PM to 4:00 PM

UM01EBBI01 – COMPANY MANAGEMENT

Total Marks: 60

Q-1 What is Office Management? Discuss functions of Office Management in detail. (15)

OR

Q-1 Discuss procedure of Inward and Outward Communication of Office Management. (15)

Q-2 Give meaning of company. Discuss procedure for formation of Joint Stock Company (15)

OR

Q-2 Write in detail on following: (15)
1. Memorandum of Association
2. Articles of Association

Q-3 Discuss in detail: Position & Appointment of Director (15)

OR

Q-3 Write in detail on: Qualification & Appointment of Managing Director (15)

Q-4 Write Short Note on Following: (15)
1. Notice
2. Agenda
3. Quorum

OR

Q-4 Discuss Legal Provisions and secretarial duties for Statutory Meeting of the company. (15)

— / —
①

(6) Seat No.: _____

No. of Printed Pages : 1

SARDAR PATEL UNIVERSITY
F.Y. BBA (ITM), 3 Years SEM-I (CBCS) EXAMINATION (MC)
Friday, 17th March, 2017
2:00 P.M. To 4:00 P.M.
UM01EBBI02: Micro-Economics

Note: Figures to the right indicate full marks.
Draw diagrams wherever necessary.

Maximum Marks: 60

Q.1 (A) Differentiate Micro-Economics and Macro-Economics. 07

Q.1 (B) Discuss the scope of economics. 08

OR

Q.1 Explain Robbins definition of economics with its criticism. 15

Q.2 (A) Explain the standard of living and the factors determining standard of living. 07

Q.2 (B) Enlist basic concepts of economics and Explain Price and Value. 08

OR

Q.2 (A) Discuss Utility and its types with suitable examples. 07

Q.2 (B) Define Consumer Surplus and write its assumptions. 08

Q.3 Define law of demand and explain exceptions to the law of demand with suitable examples. 15

OR

Q.3 Define law of supply and What is change in supply and shift in supply? 15

Q.4 (A) What is the meaning of cost? Explain the concept of Total Cost, Fixed Cost, Variable Cost, Average Cost and Marginal Cost. 07

Q.4 (B) Why is MC curve U-shaped? Explain it with diagram. 08

OR

Q.4 Explain the Marginal Productivity Theory of Distribution. 15

-: Good Luck :-

— ✕ —

①

SARDAR PATEL UNIVERSITY

B.B.A. (ITM) SEMESTER: VIII EXAMINATION (2010 Batch) (NC)

2017

Friday, 10th March

02:00 P.M. To 04:00 P.M.

UM08EBBI03: FUNDAMENTALS OF INTERNATIONAL FINANCE - II

Total Marks: 60

- Note:** 1. Figure to the right indicate full marks of question.
 2. All questions carry equal marks.
 3. Working notes are the part of answer.

- Q-1 Write a note on: [15]
 1. Basic frame work of Multinational capital budgeting.
 2. Incorporating Countries risk analysis in International capital budgeting

OR

- Q-1 Explain any four issues in international capital budgeting. [15]

- Q-2 Explain any three techniques of project evaluation criteria. [15]

OR

- Q-2 An Indian company is planning to set up a subsidiary in the US. The initial project cost is estimated to be US dollar 400 million; working capital requirements are estimated at US dollar 40 million. The Indian company follows the straight-line method of depreciation. [15]

The finance manager of the Indian company estimated data in respect of the project as follows:

1. Variable cost of production and sales \$25 per unit.
2. Fixed cost per annum are estimated at \$30 million
3. Plant will be producing and selling 5 million units at \$100 per unit
4. The expected economic useful life of the plant is 5 years with no salvage value.

The subsidiary of the Indian company is subject to 40% corporate tax rate in the US and the required rate of return of such a project is 12%. The current exchange rate between the two countries is Rs. 48/US dollar and the rupee is expected to depreciate by 3% p.a. for the next 5 years. The subsidiary will be allowed to repatriate 70% of the CFAT every year along with the accumulated arrears of blocked funds at year-end 5, the withholding taxes are 10%. The blocked funds will be invested in the USA money market by the subsidiary, earning 4% (free of tax) per year.

Determine the feasibility of having a subsidiary company in the USA, assuming no tax liability in India on earnings received by the parent from the US subsidiary.

Q-3 Discuss cost of capital across countries along with country differences in cost of debt and cost of equity. [15]

OR

Q-3 (A) The following information is taken from the books of SHIVAY limited. [08]

Particulars	Amount (Rs.)	Specific Cost after tax (%)
Equity Capital	36,00,000	9.00
14% Pref. capital	4,00,000	7.00
10% Debentures	16,00,000	5.00
Retained Earning	24,00,000	7.00

(B) What are the differences in the estimation of cost of debt? [07]

Q-4 What are the steps are taken by multinational corporation to manage cash and near cash assets? - Explain. [15]

OR

Q-4 Write a note on: [15]

1. Inventory management in context of MNC
2. Receivable Management in context of MNC.

All the Best

— X —
②

SARDAR PATEL UNIVERSITY

MARCH : 2017 EXAMINATION, BBA (ITM) SEMESTER : I (NC)
SATURDAY, 18/03/2017

MORNING SESSION TIME : 2.00 TO 4.00 PM

SUBJECT CODE : UM01EBBI03

BUSINESS MATHEMATICS

TOTAL MARKS : 60

Q-1 (A) Define the terms : [05]

- (1) Subset (2) Complement of a set (3) Square matrix
(4) Transpose of a matrix (5) Identity matrix

Q-1 (B) Verify De'Morgan laws for $U = \{a, b, c, d, e, f, g, h, i\}$, $A = \{a, b, c, e, f\}$, $B = \{e, d, f, g\}$ [05]

Q-1 (C) If $A = \begin{bmatrix} 1 & 2 & 3 \\ 2 & 3 & 1 \\ 3 & 1 & 2 \end{bmatrix}$ and $B = \begin{bmatrix} 3 & 1 & 2 \\ 2 & 3 & 1 \\ 1 & 2 & 2 \end{bmatrix}$ then find AB and BA. [05]

OR

Q-1 (A) If $A = \begin{bmatrix} 3 & 5 \\ 1 & 2 \end{bmatrix}$ and $B = \begin{bmatrix} 4 & 5 \\ 3 & 4 \end{bmatrix}$ then check $(AB)^T = B^T A^T$ [05]

Q-1 (B) If $A = \begin{bmatrix} 4 & -1 \\ -1 & 3 \\ 2 & 0 \end{bmatrix}$, $B = \begin{bmatrix} -2 & 5 \\ 3 & -1 \\ 5 & 2 \end{bmatrix}$ and $C = \begin{bmatrix} 2 & 4 \\ -1 & -5 \\ 3 & -2 \end{bmatrix}$ then find [05]

- (1) $A+B$ (2) $A+B+C$ (3) $3A-4B+2C$

Q-1 (C) Draw the Venn diagram for (1) Subset (2) Union (3) Intersection (4) Complement of a Set [05]

Q-2 (A) Evaluate : [05]

(1) ${}_{10}P_3 \times {}_6P_2$

(2) ${}_{50}C_{48}$

(3) ${}_{20}C_4 \div {}_{10}C_4$

Q-2 (B) Find n, if [05]

$16 \times {}_n P_3 = 13 \times {}_{(n+1)} P_3$

Q-2 (C) Find the number of committees of 5 members from 7 boys and 4 girls. Which can be formed such that each committee contains at least one girl? [05]

OR

- Q-2 (A) Find n and r if [15]
 ${}_nP_r = 360$ and ${}_nC_r = 15$
- Q-2 (B) How many three digit numbers can be formed from the digits 1, 4, 5, 7, 6, 2 and 8 only one time? How many of them are [05]
 (1) Odd numbers
 (2) Divisible by 5
 (3) Less than 700
 (4) More than 500?

- Q-2 (C) A question paper contains 10 questions divided into two sections of 5 questions each. In how many ways a student can answer 6 questions taking at least 2 questions from each section? [05]

- Q-3 (A) Find dy/dx for following. [09]
 (1) $y = x + \frac{1}{x} + \log x + a^x$
 (2) $y = x^7 \cdot e^x \cdot \log x$
 (3) $y = \frac{\log x}{x}$

- Q-3 (B) Find the maximum and minimum value of [06]
 $f(x) = \frac{2}{3}x^3 + \frac{1}{2}x^2 - 6x + 8$

OR

- Q-3 (A) Write the rules of differentiation. [05]
- Q-3 (B) A company has examined its cost and revenue structure. Total cost function C and total revenue function R for x units of production are as under. [05]

$$C(x) = 500 + \frac{1}{x}x^2, \quad R(x) = 200x$$

Find the production units x that will maximize the profit of the company.

- Q-3 (C) If the supply function $x=5+2P^2$ then find elasticity of supply when $P = 2$. [05]
- Q-4 (A) Define the terms with appropriate formula for following. Sinking Fund, Simple interest, Compound interest, Annuity. [05]
- Q-4 (B) The population of a city at present is 76,162, which was 65,673 before 5 years. [05]
 Find out the rate of growth of population.
- Q-4 (C) Cost of building a new house is Rs. 4,70,000 at present. If it is increases at 8% every year, find out the increased cost of a similar house if it is built after 3 years. [05]

OR

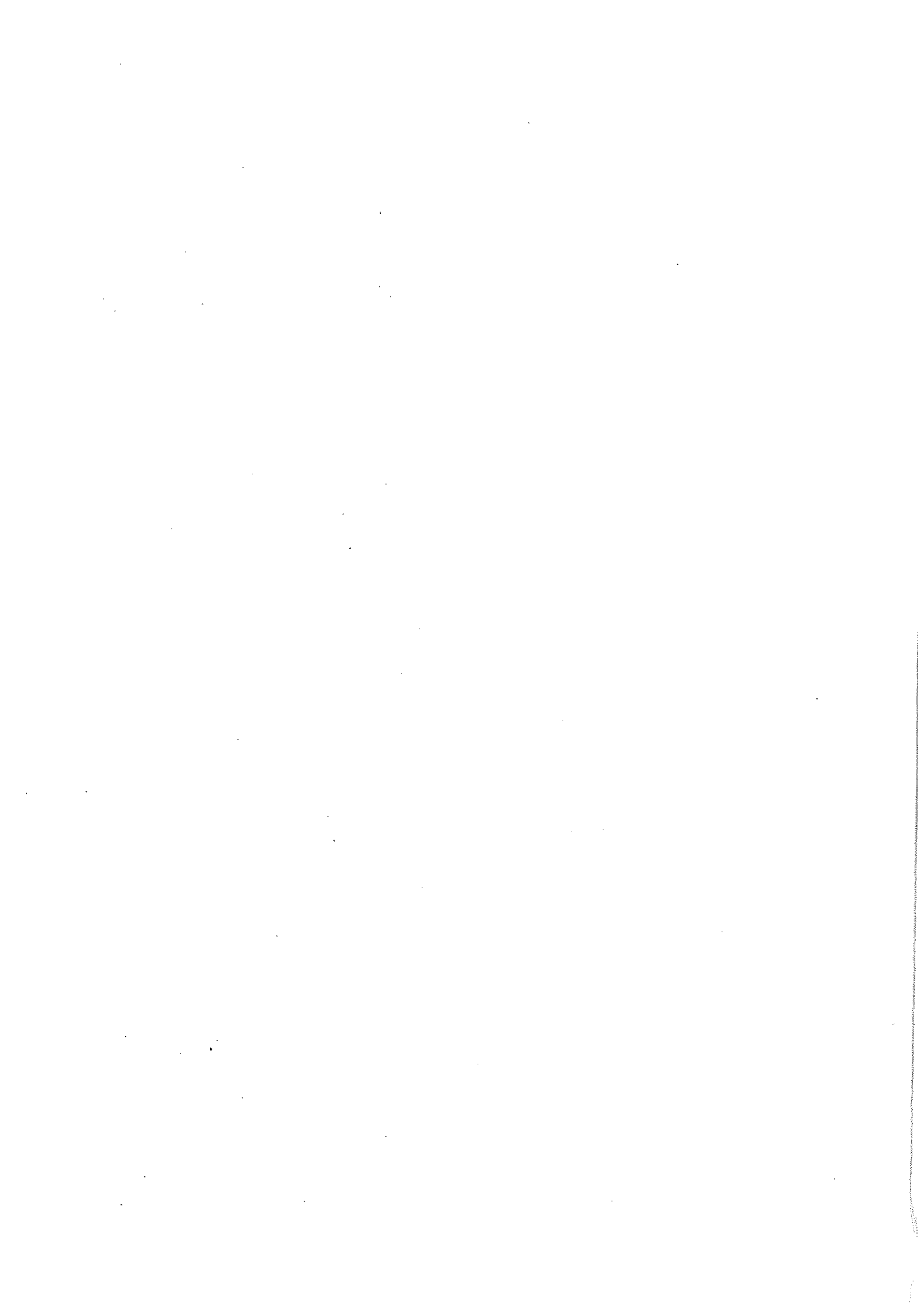
- Q-4 (A) Priya has opened a recurring account for a period of 10 years. She deposits Rs. 2500 in this account in the beginning of every year if the rate of interest is 11%, find out the total amount in her account at the end of 10 years. [05]

Q-4 (B) Pinal borrows Rs. 32,000 at the rate 16% of simple interest and invests it on the same day at the rate 14% of compound interest. At the end of 4 years how much profit or loss will she have? [05]

Q-4 (C) A company purchases a machine on 1-1-2016 for Rs. 2,00,000, with the expected life of 12 years, when a new machine will have to be purchased, it would cost double the price as previous. In order to purchase a new machine, what amount should be invested on 31st December every year for 12 years at 15% of interest? [05]

All the Best





(1) Seat No.: _____

No. of Printed Pages : 1

SARDAR PATEL UNIVERSITY
B.B.A. (1st - SEMESTER) EXAMINATION
REGULAR & NC (ITM) (3 YEARS)

TUESDAY, 21st MAR, 2017
2-00 P.M. to 4-00 P.M.

MANAGEMENT OF SMALL & MEDIUM ENTERPRISES: UM01EBBI04

Total Marks: 60

Q-1 Define the terms 'Entrepreneur' & 'Entrepreneurship'. Discuss any five qualities of successful entrepreneurs. 15

OR

Q-1 Explain in detail the procedure of setting up MSMEs in India. 15

Q-2 Write notes on: 15

(A) Micro & Small Enterprise Cluster Development Program.

(B) Credit Linked Capital Subsidy Scheme for Technology Up gradation.

OR

Q-2 Write notes on: 15

(A) Special Schemes for Backward area.

(B) Scheme on trade related entrepreneurship assistance and development.

Q-3 Discuss in detail the Export Promotion Policy for SMEs. 15

OR

Q-3 Describe the main provisions of MSME Development Act, 2006. 15

Q-4 Write notes on: 15

(A) Bar coding.

(B) World Trade Organisation.

OR

Q-4 Write notes on: 15

(A) International SME Network.

(B) Intellectual Property Rights.

— X —

(3) Seat No.: _____

NO. of Printed Pages: 04

SARDAR PATEL UNIVERSITY

BBA (IB) Semester – 1 Examination (MC)

Thursday, 9th March, 2017

Time:

2.00 – 4.00 p.m.

Communication Skills for International Business

UM01FBBA01

Note: (1) Figures to the right indicate full marks to the question concerned.

(2) Your answer must be precise.

(3) Maximum Marks: 60

Q. 1 Attempt the following Questions: (15)

- (1) How did Brindaban's marriage affect his relations with his father?
- (2) What were the four important things that Connie failed to notice when she was going round the house and garden?

OR

Q. 1 Attempt the following Questions: (15)

- (1) What mistakes did Andrew make during the race?
- (2) What according to the Baroness was the legend of Cerongratz Castle?

Q. 2(A) Fill in the blanks using appropriate forms of the verbs given in the brackets: (05)

- (1) He _____ a wonderful speech yesterday. (make)
- (2) Children _____ sweets. (like)
- (3) Don't make a noise, the child _____ (sleep)
- (4) I _____ here tomorrow. (come)
- (5) They _____ when I left the hall. (dance)

(B) Use appropriate modal auxiliaries to bring out the meaning of the word/s given in brackets: (05)

- (1) You _____ easily lift it. (ability)
- (2) Smita _____ advise her maid servant (absence of necessity)
- (3) We _____ respect our elders. (moral obligation)

(P. T. O.)

(4) _____ I park my car here? (permission)

(5) How _____ speak like this? (courage)

(C) Write a Paragraph on any one of the following: (05)

(1) Pollution

(2) My Favorite National Leader.

OR

Q. 2(A) Fill in the blanks using appropriate forms of the verbs given in brackets: (05)

(1) Rima _____ first in the class last year. (stand)

(2) This old man _____ this temple every Monday. (visit)

(3) See, they _____ cricket now. (play)

(4) He _____ just _____ for Mumbai (leave)

(5) The patient _____ before the doctor come. (die)

(B) Change the Voice: (05)

(1) Who killed Ravana?

(2) I have seen this report twice.

(3) The president will inaugurate the international seminar.

(4) I help poor patients every day.

(5) You must obey the order.

(C) Write a paragraph on any one of the following: (05)

(1) Diwali Celebration

(2) "Swachha Bharat" Campaign

Q. 3(A) Complete the sentences by inserting suitable prepositions form the brackets to form verbal phrases: (05)

(1) The lady is looking _____ her last purse. (in, for, off)

(2) The programme was called _____ due to heavy rain. (in, at, off)

(3) The Chief Guest gave _____ prizes. (in, away, for)

(4) She was brought _____ by her grandmother. (up, off, away)

(5) Rina likes to put _____ new dress every day. (away, off, on)

(B) Select appropriate meaning of the underlined idiomatic expressions with one of the best alternatives given below: (05)

(1) I want your reply in black and white.

- (a) In person (b) in writing (c) in a black and white room

(2) The junior clerk is in the soup.

- (a) in a restaurant (b) in trouble (c) in a comfortable position

(3) The young boy proved himself to be a dark horse in the final match.

- (a) an unlucky person (b) a strong horse (c) an unexpected winner

(4) Mr. Shah does not like friends who beat about the bush

- (a) say things honestly (b) say things directly (c) say things indirectly

(5) I was at sea when the lady started speaking Tamil.

- (a) Pleased (b) Confused (c) Satisfied

(C) Rewrite the sentences given below replacing the underlined words with synonyms from the given list in brackets. (unusual, friendly, wise, hide, inflexible) (05)

(1) This decision was judicious.

(2) The stranger wanted to conceal something in his jacket.

(3) Cordial relations are important for success in business.

(4) His personality is rigid.

(5) It was a rare sight.

OR

Q. 3(A) Complete the sentence by inserting suitable prepositions from the brackets to form verbal phrases: (05)

(1) Epidemic break _____ in Chennai last year. (in, out, off)

(2) He is fond of showing _____ his wealth to his friend. (in, off, away)

(3) At last the terrorist gave _____. (in, off, away)

(4) You must cut _____ your expenses for a better future. (off, down, into)

(5) The supervisor should carry _____ instructions of the manager. (out, for, down)

(P. T. O.)

(3)

(2) Seat No.: _____

No. of Printed Pages : 1

SADAR PATEL UNIVERSITY

BBA(Gen) Examination, 1st Semester (NC)

Friday Date: 10th March, 2017

Session: ~~Morning~~/Evening Time: 2.00 P.M to 4.00 P.M

Subject/Course Code: UM01FBBA03/ Paper No. _____

Subject Title: Environmental Studies

Total Marks: 60

NOTE:

1. Figures to the right indicate full marks of the Question concerned.
2. Answers should be precise and to the point.
3. Start new answer from new page.

- Q.1 Define Environmental Studies. Examine the Renewable and Non-Renewable Resources in detail. (15)
- OR
- Q.1 (A) Explain equitable use of resources for sustainable life styles. (07)
(B) How can we increase public awareness to protect the Environment? (08)
- Q.2 Explain the problems and prospects associated with the water and energy resources for a better human life. (15)
- OR
- Q.2 (A) Explain the importance of Forest Resources. (07)
(B) What is the role of individual in Conservation of Natural Resources ? (08)
- Q.3 What do you mean by Ecosystem? Explain the Characteristics and functions of Ecosystems in detail. (15)
- OR
- Q.3 (A) Explain the types of Ecosystem (07)
(B) Write a note on: Aquatic Ecosystem (08)
- Q.4 What is Biodiversity? Explain Biodiversity at Local, National and International Levels. (15)
- OR
- Q.4 Write notes on the following:
(A) Threats of Biodiversity (07)
(B) Genetic Biodiversity (08)

— X —
①

(2) Seat No.: _____

No. of Printed Pages: 04

SARDAR PATEL UNIVERSITY
BBA (Gen) Semester I Examination (MC)
Thursday, 09th March, 2017
Time: 2.00 pm to 4.00 pm
Communication Skills for Management - I
UM01FBBA05

- Note: 1. Figures to the right indicate full marks to the questions concerned.
2. Your answers must be precise.
3. Maximum Marks: 60

- Q-1 Attempt the following: (any three) (15)
1. What were the four important things that Connie failed to notice when she was going round the house and garden?
 2. What, according to the Baroness, was the legend of Cernogratz Castle?
 3. How did Brindaban's marriage affect his relations with his father?
 4. What did most of the people in the town think of Locomotive 38?
 5. What was the ambition of Andrew's life?

OR

- Q-1 Write brief notes on: (any three) (15)
1. The baroness's attitude towards the old governess
 2. The Indian – Locomotive 38
 3. The mistakes of Andrew
 4. Meanness of Jaganath
 5. Connie and the burglar

- Q-2 [A] Do as directed:
1. Use the correct tense form of the verbs given in brackets and complete the sentences: (03)
 - a. If you _____ some money, you would have lived a comfortable life. (save)
 - b. I _____ Nepal last Summer. (visit)
 - c. An apple a day _____ the doctor away. (keep)
 2. Change the voice in the following sentences: (03)
 - a. We should keep our promises.
 - b. People speak English all over the world.
 - c. Shakespeare wrote *Romeo and Juliet*.
 3. Use appropriate modal auxiliaries to bring out the meaning of the word/s given in brackets: (04)
 - a. I _____ visit my grandparents during the weekend. (possibility)
 - b. How _____ you use my laptop without my permission! (sense of courage)
 - c. He _____ apologize for his mistake. (strong obligation)
 - d. _____ I borrow your book? (permission)

[B] Write a paragraph on **any one** of the following: (05)

- a. Facebook: a friend or an enemy?
- b. Opportunity seldom strikes twice

OR

Q-2 [A] Do as directed:

1. Use the correct tense form of the verbs given in brackets and complete the sentences: (03)

What are you doing?

I _____ a book. (read)

I usually _____ good English novels. (read)

Last week I _____ a book on Time. (read)

2. Change the voice in the following sentences: (03)

- a. The peon is ringing the bell.
- b. My new watch has been stolen.
- c. Who broke this window pane?

3. Use appropriate modal auxiliaries to bring out the meaning of the word/s given in brackets: (04)

- a. Mr Deepak _____ speak French. (ability)
- b. We _____ look after our parents in their old age. (moral obligation)
- c. I _____ read without glasses a couple of years ago. (past ability)
- d. You _____ come to college tomorrow. (absence of necessity)

[B] Write a paragraph on **any one** of the following: (05)

- a. Books – our best friends
- b. A day in the life of a hawker

Q-3 Do as directed:

[A] Complete the sentences by inserting suitable propositions from the brackets to form verbal phrases: (05)

1. Last night I went to the Airport to see my friend _____. (out, through, off)
2. The luxury bus ran _____ the cyclist killing him on the spot. (over, on, away)
3. At the Annual Day Celebration, the Chief Guest gave _____ the prizes and awards. (of, away, up)
4. He looks _____ the house when his parents are away. (after, at, to)
5. The lady broke _____ on hearing the news of her husband's death. (up, down, in)

[B] Rewrite the sentences given below replacing the underlined words with **synonyms** from the given list in brackets: (05)

(seized, unfriendly, careful, cheerful, kind, correct)

1. Puja was loved and respected for her benevolent nature.
2. They have been asked to rectify all the errors.
3. His hostile attitude annoyed his friends.
4. The teacher confiscated the electronic gadgets of the students.
5. She is a very cautious driver.

[C] Rewrite the sentences given below replacing the underlined words with **antonyms** from the given list in brackets: (05)

(List: appreciation, vices, curse, departure, fertile, stinginess)

1. Social networking sites are a blessing to the people.
2. Much of the land in this village is barren.
3. What is the arrival time of the train?
4. He is known for his virtues.
5. He received a lot of praise for the good work he had been doing.
- 6.

OR

Q-3

Do as directed:

[A] Select appropriate meaning of the underlined idiomatic expressions (05) from one of the alternatives given below:

1. Aakshat was the new student who felt like a fish out of water.
 - a. Very low
 - b. disappointed
 - c. uncomfortable
2. Students usually start studying for the examination at the eleventh hour.
 - a. at eleven o'clock
 - b. at the last moment
 - c. late at night
3. When she got the gold medal for securing the highest marks, she was on top of the world.
 - a. extremely happy
 - b. on the seventh storey
 - c. scandalized
4. The old man is terminally ill and his days are numbered.
 - a. he is unconscious
 - b. he is on the road to recovery
 - c. he has a few days to live
5. Please do not trust him. He is a snake in the grass.
 - a. a secret friend
 - b. a secret enemy
 - c. a secret agent

(5) Seat No.: _____

No. of Printed Pages : 1

SARDAR PATEL UNIVERSITY

BBA (IB) Examination 1ST Semester NC

Friday Date 10/03/2017

Evening Session Time: 02.00 pm to 04.00 pm.

Subject/Course : Environmental Studies

Subject/Course Code: UM ^B01FBB02

UM01FBB02

Total Weightage/Marks:60

- Q-1 Discuss the Definition, Scope and Importance of environmental studies. (15)
OR
- Q-1 Explain the equitable use of resources for sustainable life style. (15)
- Q-2 Discuss the associated problems associated with forest and water resources. (15)
OR
- Q-2 Discuss the role of individuals in conservation of natural resources. (15)
- Q-3 Discuss the structure and functions of various ecosystem. (15)
OR
- Q-3 Explain the role of individuals in sustaining various types of ecosystem. (15)
- Q-4 Discuss: India as a mega diversity nation. (15)
OR
- Q-4 Explain the threats and conservations of biodiversity. (15)

.*.

— X —

(1)

(4 & 8) Seat No.: _____

No. of Printed Pages : 1

SARDAR PATEL UNIVERSITY

F.Y.B.B.A – HM / TTM (SEM - I) EXAMINATION

UM01FBBH04/ T04 – ENVIRONMENT STUDIES

DATE-10/03/2017, Friday

DAY- FRIDAY
FRIDAY
MARKS-60

TIME- 2.00 P.M - 4.00 PM

Q: 1. A What do you mean by an environmental study? Explain its scope. 08

Q: 1. B What is difference between renewable and non-renewable resources. 07

OR

Q: 1. A Explain the importance if environmental study. 08

Q: 1. B What is equitable use of resources for sustainable life styles. 07

Q: 2. A Write a note on mineral resources. 08

Q: 2. B Write a note on water resources. 07

OR

Q: 2. A Explain the role of individual in the conservation of natural resources. 08

Q: 2. B Write a note on energy resources. 07

Q: 3. A Write a note on Forest ecosystem. 08

Q: 3. B Write a note on Grassland ecosystem. 07

OR

Q: 3. A Discuss the role of individual in sustaining various ecosystems. 08

Q: 3. B Write a note on desert ecosystem. 07

Q: 4. What are the threats of Biodiversity? Explain the conservation of Biodiversity. 15

OR

Q: 4. A Write a Detail note on Biodiversity at Local, National and global levels. 15

— X —

①

[5] Seat No.: _____

No. of pages: 3

SARDAR PATEL UNIVERSITY
BBA – ITM Examination (Semester – I) (NC)

Thursday, 09th March
2017

2:00 P M to 4:00 PM

UM01FBB105/06 - Communication Skills for Management – I

Total Marks: 60

- Q – 1 Answer the following questions 15**
1. Who was Amalie really and what she said about the castle in 'The Wolves of Cernogratz?
 2. Why did Andrew enjoy himself so much after the race in 'The Half Mile?
 3. What did most of the people in the town think of Locomotive 38?
 4. What were four important things that Connie failed to notice when she was going round the house and garden?
 5. How did Nitai Pal die in the story 'The Trust Property?
- OR**
- Q – 1 Answer the following questions 15**
1. What was the legend of Cernogratz Castle in 'The Wolves of Cernogratz?
 2. What mistakes did Andrew make during the race in 'The Half Mile?
 3. Why did Locomotive 38 not drive the car while he was living in the town?
 4. Who wanted to kill Connie in 'The Uneasy Homecoming'? Why?
 5. Why did Nitai Pal stay with Jaganathin 'The Trust Property?
- Q – 2 A Fill in the blanks with the right forms of the verbs given within brackets 03**
1. There is some mistake in the account. Mahesh _____ just _____ it. (have, calculate)
 2. I don't know where he is right now. Last night he _____ here. (come)
 3. When I saw him he _____ cricket match. (was, watch)
- B Change the following sentences to the other voice 03**
1. She carved this beautiful sculpture last week.
 2. The road to Kedarnath was closed by the authority due to heavy rain.
 3. Great king built this castle in the 16th century.
- C Fill in the blanks with the appropriate modals that indicate the moods given within brackets 04**
1. I _____ always beat you at tennis when we were kids. (should, could, would)
 2. She _____ be my class teacher next semester. (might, can, must)
 3. Don't you _____ touch anything on my table! (should, could, dare)
 4. If you studied harder, you _____ have got better marks. (would, could, should)
- D Write a paragraph on: Use of mobile phone in education 05**
- OR**
- Q – 2 A Fill in the blanks with the right forms of the verbs given within brackets 03**
1. If we start our day early, then we _____ in time. (will, reach)
 2. Instead of going north, he _____ to south and reached Bangalore. (drive)
 3. To attain this position, he _____ very hard for last two years. (has, work)

- B Change the following sentences to the other voice** 03
1. They are launching new model of this car next month.
 2. He is being interrogated by police.
 3. My mom read the novel in one day.

- C Fill in the blanks with the appropriate modals that indicate the moods given within brackets** 04
1. I hear the whistle. That _____ the five o'clock train. (could, would, can)
 2. It is unbelievable that she _____ have done this. (will, can, might)
 3. You _____ not smoke near petrol pump. (must, will, can)
 4. He _____ surely keep his promise. (may, will, should)

- D Write a paragraph on: Most enjoyable holiday trip** 05

- Q – 3 A Fill in the blanks with the right phrasal verbs given within brackets.** 05
[postponing, cancelled, distribute, forcefully entered to a building, overcome]
1. Somebody **broke in** last night and stole our stereo.
 2. Jason **called** the wedding **off** because he wasn't in love with his fiancé.
 3. The company will have to close if it can't **get over** the problem.
 4. We will **hand out** the invitations at the door.
 5. We are **putting off** our trip until January because of the hurricane.

- B Choose the antonyms of the underlined words in the following sentences** 05
from the options given
1. I didn't mean to yell at you, but you nearly scared me to death.
A. cry B. shout C. whisper D. scream
 2. Do not malign me simply because you are jealous of my wealth!
A. disagree B. compare C. praise D. avoid
 3. Beautiful and slender, she was likewise deadly.
A. alike B. further C. but D. otherwise
 4. The preface of this book is impressive
A. cover B. conclusion C. meaning D. translation
 5. The cruel prison guard did everything he could to debase inmates and make them feel worthless.
A. raise B. destroy C. harass D. torture

- C Choose the synonyms of the underlined words in the following sentences** 05
from the options given
1. Each boom of thunder was loud enough to rattle the window panes.
A. entertain B. vibrate C. maintain D. move
 2. The messy studio from last week had been transformed into a professional art gallery.
A. spotless B. dirty C. clean D. Tidy
 3. Helen got up this morning like a radiant fairy.
A. tired B. splendid C. imaginary D. furious
 4. Russians fortified their position on the battlefield against enemies.
A. lost B. strengthened C. set D. arranged
 5. By this step, government is planning radical change in the system.
A. fundamental B. operational C. immediate D. temporary

OR

SARDAR PATEL UNIVERSITY**F.Y.B.B.A. (ITM) - 3 Years****External Examination** March 2017**Semester I****Day:** Friday**Date:** 10th March, 2017**Session:** Afternoon**Time:** 2:00 A.M. TO 4:00 P.M.**Subject Code:**

U M 0 1 F B B I 0 7

Subject Title:**ENVIRONMENTAL STUDIES****Total Marks: 60****Note:**

All the questions are compulsory.

Draw diagrams and cite examples wherever necessary.

Figures to the right indicate marks.

- Q. 1 (a)** Explain the equitable use of natural resources for the sustainable life style. [07]
(b) Describe the importance of environmental studies. [08]
- OR**
- Q. 1 (a)** Discuss the definition and scope of environmental studies in detail. [07]
(b) Write short note on non-renewable resources. [08]
- Q.2** Discuss the role of individual in conservation of natural resources in detail. [15]
- OR**
- Q.2** Write a short note on
- (a)** Energy resources [07]
(b) Land resources [08]
- Q. 3** Define the word 'Ecosystem'. Also explain functions and types of Ecosystem. [15]
- OR**
- Q. 3 (a)** Explain the characteristics of Grassland Ecosystem. [07]
(b) Explain concept of aquatic ecosystem in brief. [08]
- Q. 4** Discuss threats & conservation of biodiversity in detail. [15]
- OR**
- Q. 4** Narrate ecosystem biodiversity at global, national and local levels in India as a mega diversity nation. [15]

(6) Seat No.: _____

No. of Printed Pages: 1

SARDAT PATEL UNIVERSITY

BBA(ISM) 1ST SEMESTER EXAMINATION (NC)

10th March, 2017, Friday

Environmental Studies (UM01FBBS03)

TIME:- 2:00 P.M to 4:00 P.M

Marks:-60

NOTE:- 1) Figures to the right indicate full marks of the question.

2) Draw all diagrams wherever necessary.

Q-1(A) Discuss the importance of environmental studies. (08)

(B) Explain the equitable uses of resources for sustainable lifestyles. (07)

OR

Q-1 Discuss in detail renewable and non-renewable resource with proper example. (15)

Q-2(A) Explain water resources. What are the problems associated with it discuss? (08)

(B) Discuss Role of individual in conservation of Natural Resources. (07)

OR

Q-2 Explain forest and mineral resources. Discuss in detail problems associated with forest and mineral resources. (15)

Q-3(A) Discuss the concept and functions of ecosystem. (08)

(B) Explain the types and of ecosystem. (07)

OR

Q-3 Explain Forest, Grassland, desert and Aquatic Ecosystem. (15)

Q-4(A) What is Biodiversity? Explain different types of Biodiversity. (08)

(B) Discuss the threats and conservation of biodiversity. (07)

OR

Q-4 Discuss in India as a mega diversity nation. (15)

— X —
①

(4) Seat No.: _____

NO. of Printed Pages: 03

SARDARPATELUNIVERSITY

BBA ISM I Semester Examination (NC)

Thursday, 9th March, 2017

02:00 PM to 04:00 PM

Communication Skills for Management-I UM01FBBS05

Total Marks: 60

Note: Figures to the right indicates full marks:

Que. 1 Attempt the following: (15)

1. What was the story of old governess?
2. What mistakes did Andrew make during the race?
3. Why did police want to arrest Locomotive 38? Why did they not arrest him?

OR

Que. 1 Attempt the following: (15)

1. What happened to Amalie before the New Year, and what was the Baroness' reaction to this?
2. Why did the village people envy Nitai Pal? How did they show this envy?
3. Why did Connie not go to Mrs. Winston's house?

Que. 2 a). Fill in the blanks with appropriate verb given in the bracket: (05)

1. Rahul always _____ to office by auto. (go)
2. Look! The children _____ on the bed. (jump)
3. My sister _____ new mobile next Sunday. (buy)
4. We _____ for USA on Monday. (leave)
5. Sneha _____ in honour of the Chief Guest. (Sing)

Que. 2 b). Change the Voice: (05)

1. Shivam can write a letter.
2. Dr. Trevidi taught us English.
3. I was given an apple.
4. Can you manage it?
5. Ronny will sing a song.

Que. 2 c). write a Paragraph on : (05)
My favorite Game

OR

(1)

(P.T.O.)

Que. 2 a). Fill in the blanks with appropriate Modal given the bracket: (05)

1. _____ I borrow your Phone? (Can, Shall, May)
2. _____ you help me to start ma car? (Will, Should, May)
3. We _____ follow the traffic rules. (Used to, would, Must)
4. Study hard that you _____ get a First Class. (Should, May, Must)
5. You have worked whole day, you _____ be tired. (Must, Should, Could)

Que. 2 b). Rewrite the sentences with right forms of the verbs given in the bracket: (05)

1. Our collage _____ at 11 o'clock every day. (Start)
2. I see a man outside. He _____ to say something. (try)
3. My grandmother always _____ to lock the door. (forget)
4. Dr. Mishra _____ her lecture in the morning. (give)
5. Mohit _____ our new hostel tomorrow. (visit)

Que. 2 c). Write a Paragraph on: (05)

Friendship

Que.3 a). Fill in the blanks in the following sentences with the Phrasal Verbs: (05)

1. Please _____ the lights. (put after, put out, put up)
2. I cannot _____ his handwriting. (make out, make by, make away)
3. If he is lazy, why don't you _____ him _____. (turn in, turn up, turn off)
4. I hope he will _____ to our views. (come round, come about, come up)
5. The fire _____ a dense smoke. (gave up, gave aside, gave off)

Que.3 b). Match A with B: Antonyms (05)

- | A | B |
|-------------|------------|
| 1. Care | fair |
| 2. external | particular |
| 3. general | rural |
| 4. partial | neglect |
| 5. urban | internal |

Que.3 c). Match A with B: Synonyms (05)

- | A | B |
|------------|-----------|
| 1. accuse | rich |
| 2. elegant | repulsive |
| 3. panic | terror |
| 4. ugly | refined |
| 5. wealthy | blame |

OR

Que.3 a) Rewrite the sentences giving the right meaning of the underlined idioms: (05)

(gradually, a deception, something easy to perform, to feel comfortable, to follow wrong path)

1. Getting admission to an IIM is not a child's Play.
2. Don't lose patience; things will improve by and by.
3. The office environment is so good that the employees feel perfectly at home there.
4. The authorities had already decided which candidates to appoint. The interview was only an eye-wash.
5. The children of estranged parents are likely to go astray for want of sound ethical values.

Que.3 b) Write one word substitution: (05)

1. One who cannot read or write -
2. Free from infection-
3. A place for improving health -
4. A study of plants -
5. The property left to someone by a will-

Que.3c) Fill in the by using the correct forms of the words given in the bracket: (05)

1. Let us find a _____ to the problem. (solve)
2. We supply _____ reply cards to all our customers. (print)
3. This is the right time to _____ it. (place)
4. There is _____ appears at the side of account department. (calculate)
5. My friend had develop interesting _____ computer software. (purpose)

Que.4 a) Describe Concept and Attributes of Communication in detail. (10)

b) Write a note on the Importance of Business Communication. (05)

OR

Que.4 a) Explain the process of communication cycle with suitable diagram. (15)

All the Best

